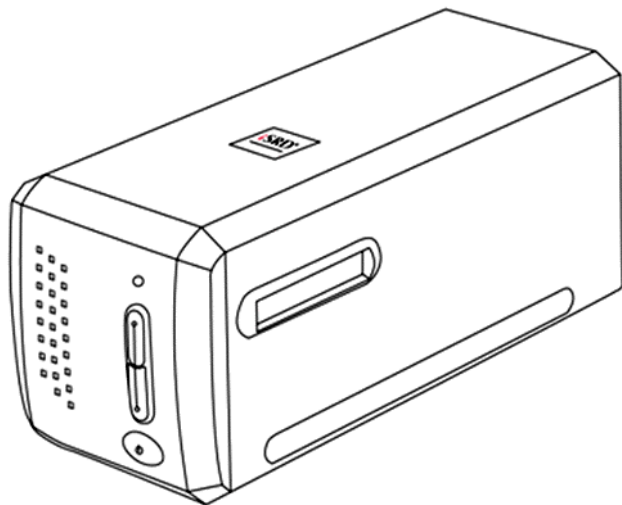




# **Scanner User's Guide**

## **OpticFilm 8100/8200i**



## Trademarks

© 2023 Plustek Inc. All rights are reserved. No portion of this document may be reproduced without permission.

All trademarks and brand names mentioned in this publication are property of their respective owners.

## Liability

While all efforts have been made to ensure the accuracy of all contents in this manual, we assume no liability for errors or omissions or by statements of any kind in this manual, whether such errors are omissions or statements resulting from negligence, accidents, or any other cause. The contents of this manual are subject to change without notice. We will not shoulder any legal liability, if users failed to follow the operation instructions in this manual.

## Copyright

The scanning of certain documents, for example checks, bank notes, I.D. cards, government bonds, or public documents, may be prohibited by law and/or subject to criminal prosecution. We recommend you to be responsible and respectful of the copyrights laws when you are scanning books, magazines, journals and other materials.

## Environmental Information

Recycle or disposal at end-of-life information, please ask local distributors or suppliers for recycle and disposal information. The product is designed and produced to achieve sustainable environmental improvement. We strive to produce products in compliance with global environmental standards. Please consult your local authorities for proper disposal.

The product packaging is recyclable.

Attention for recycling (For EU country only)

Protect your environment! This product should not be thrown into the household waste container. Please give it to the free collecting center in your community.

## Screen Examples in This Manual

The screen shots in this guide were made with Mac 10.14. If you are using Windows OS, your screen will look somewhat different but functions the same.

# Table of Contents

<b>INTRODUCTION.....</b>	<b>1</b>
A NOTE ABOUT ICONS .....	1
<b>SAFETY PRECAUTIONS .....</b>	<b>2</b>
MAINTENANCE.....	3
<b>PRODUCT OVERVIEW .....</b>	<b>4</b>
BOX CONTENTS .....	4
SCANNER OVERVIEW .....	5
<b>BEFORE INSTALLING THE SCANNER .....</b>	<b>6</b>
CONNECTING THE SCANNER TO YOUR COMPUTER .....	6
<b>INSTALLING THE SCANNER .....</b>	<b>7</b>
INSTALLING SCANNER ON WINDOWS .....	8
INSTALLING SCANNER ON MAC.....	10
<b>FILM HOLDERS .....</b>	<b>11</b>
MOUNTED SLIDE HOLDER .....	12
USING FILMSTRIP HOLDER .....	13
INSERT THE FILM HOLDER.....	14
<b>QUICKSCAN SETTINGS AND PREVIEW WINDOW FEATURES .....</b>	<b>15</b>
<b>BUNDLED SILVERFAST SOFTWARE INSTALLATION .....</b>	<b>20</b>
REQUEST FOR SILVERFAST LICENSE .....	21
INSTALLING SILVERFAST SOFTWARE.....	24
<b>OPERATING THE SCANNER .....</b>	<b>25</b>
❶ USING [INTELLISCAN] BUTTON .....	26
SCAN WITH THE SILVERFAST APPLICATION .....	27
❷ USING [QUICKSCAN] BUTTON .....	28
<b>APPENDIX A: TROUBLESHOOTING .....</b>	<b>29</b>
SCANNER CONNECTION.....	29
SCANNING PROBLEMS .....	30
<b>APPENDIX B: SPECIFICATIONS .....</b>	<b>33</b>
<b>APPENDIX C: CUSTOMER SERVICE AND WARRANTY .....</b>	<b>36</b>
SERVICE & SUPPORT INFORMATION (FOR EU COUNTRY ONLY) .....	36
STATEMENT OF LIMITED WARRANTY .....	36
FCC RADIO FREQUENCY STATEMENT .....	38

# Introduction

Welcome to the world of Plustek scanners – the ultimate in computer imaging. Your new scanner will improve the professionalism of your day-to-day computing tasks by allowing you to input images into your computer system.

Like all of our products, your new scanner is thoroughly tested and backed by our reputation for unsurpassed dependability and customer satisfaction.

Thank you for choosing us as your scanner supplier. We hope you will continue to turn to us for additional quality products as your computing needs and interests grow.

## A Note about Icons

---

This guide uses the following icons to point out information that deserves special attention.

<b>Danger</b>	<b>Danger:</b> A procedure that must be followed carefully to prevent injury, or accidents.
<b>Caution</b>	<b>Caution:</b> Information that, if not followed, may result in data loss or damage to the product.
<b>Attention</b>	<b>Pay Special Attention:</b> Instructions that are important to remember and may prevent mistakes.

# Safety Precautions

Before using this device, please read the following important information to eliminate or reduce any possibility of causing damage and personal injury.

1. Usage, the product is for indoor use in dry locations. Moisture condensation may occur inside this device and cause malfunction at these conditions:

- when this device is moved directly from a cold to a warm location;
- after a cold room is heated;
- when this device is placed in a damp room.

To avoid the moisture condensation, you are recommended to follow the procedure:

- i. Seal this device in a plastic bag for it to adapt to room conditions.
  - ii. Wait for 1-2 hours before removing this device from the bag.
2. Do use the power adapter and USB cable provided with the scanner. Use of other power adapter and cables may lead to malfunction.
  3. Keep the space around the AC adapter clear in case you need to quickly unplug the AC adapter during emergencies.
  4. Damaged wire could cause fire or electrical shock. Keep the power cord straight and without being twisted, bended, or scraped.
  5. Unplug this device if you don't need to use for a certain period of time, such as, during night or long weekend, to avoid any risks of causing fire.
  6. Do not attempt to disassemble the scanner. There is danger of an electrical shock and opening your scanner will void your warranty.
  7. Be sure not to bump or knock the scanner as it is fragile and could break.
  8. Before installing the device drivers, please disconnect all other imaging devices (other scanners, printers, digital cameras, web cameras) from the PC.
  9. Save the Setup/Application CD-ROM. You may need to reinstall the driver and software in the future.
  10. Please make sure your hands are clean before handling slides and negatives. If there is dust on your film material, please clean it by blowing it off or wiping with non-abrasive cloth.
  11. Please keep your slides and negatives in a cool, dry place out of direct sunlight. Handle with care as improper storage and handling can lead to deterioration and ultimately affect your scan results.

## Maintenance

---

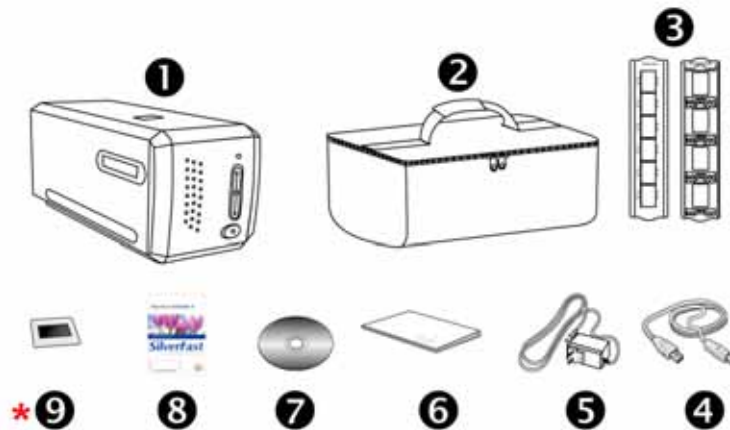
### Caution

To keep your scanner working smoothly, take a moment to review the following maintenance tips.

- ⚠️ Avoid using the scanner in a dusty environment. When it is not in use, keep the scanner covered. Dust particles and other foreign objects may damage the unit.
- ⚠️ Do not attempt to disassemble the scanner. There is danger of an electrical shock and opening your scanner will void your warranty.
- ⚠️ Do not subject the scanner to excessive vibration. It may damage the internal components.
- ⚠️ Your scanner operates best in temperatures between 10° C to 40° C (50° F to 104° F).

# Product Overview

## Box Contents<sup>1</sup>



- ❶ Scanner
- ❷ Padded carrying bag
- ❸ Mounted Slide Holder and Filmstrip Holder
- ❹ USB Cable
- ❺ Power Adapter 15V
- ❻ Quick Guide
- ❼ Plustek Setup / Application CD-ROM
- ❽ Bundled SilverFast Software Activation card  
*\*Software version varies depending on the scanner model you've purchased.*
- \*❾ 35 mm IT-8 Target (35 mm IT-8 Target is not included in all scanner models)

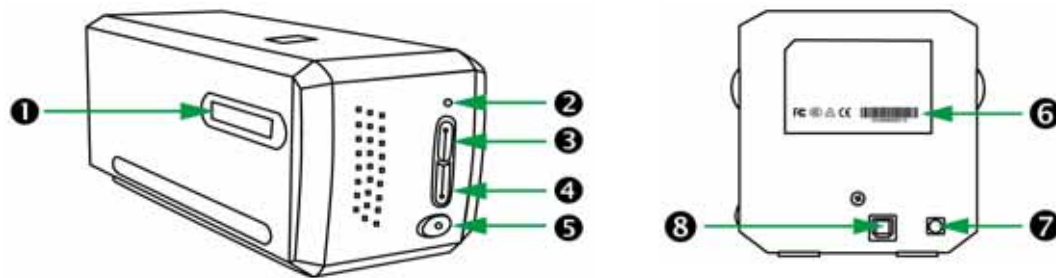
### Attention

You may find the scanner hardware serial number on the activation card, please keep the card in a safe place.



<sup>1</sup> Save the box and packing materials in case you need to transport this scanner in the future.  
Box contents may change at any time without prior notice.

## Scanner Overview



- ❶ **Film Holder Slot:** Insert the film holder into the scanner through dust cover. The film holder can be inserted from either side. The film holder will index at each frame using the notches on its side rails.
- ❷ **Power LED:** It indicates the scanner status.

Light	Status
On	The scanner is turned on, ready to scan images.
Off	The scanner is off, either because the power is not turned on, or because the power cord is not properly plugged into an AC power outlet.

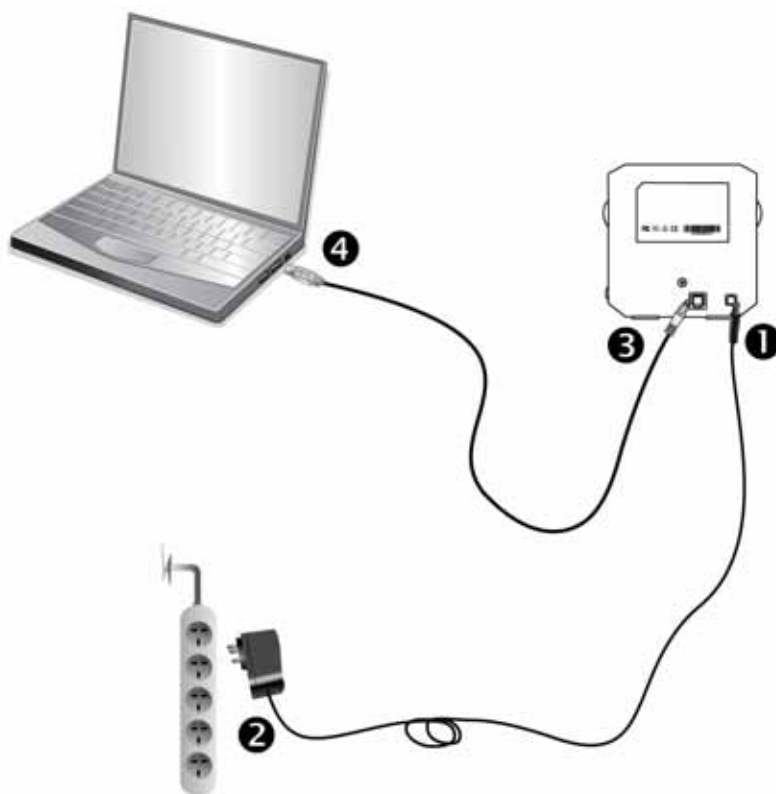
- ❸ **IntelliScan Button:** You may press the button to launch the SilverFast application.  
*\*This function is not supported on Mac OS X.*
- ❹ **QuickScan Button:** You may press the button to launch the QuickScan application.  
*\*This function is not supported on Mac OS X.*
- ❺ **Power Button:** Use this to turn the scanner ON or OFF.
- ❻ **Serial Number Sticker:** Located at the rear of the scanner.
- ❼ **Power Receptor**
- ❽ **USB Port**

### Attention

You will need the **12 digits Serial Number** for SilverFast software activation. You will also need it when you contact your dealer or our service center in the future.

# Before Installing the Scanner

## Connecting the Scanner to Your Computer



- ❶ Plug the power adapter into the scanner's power receptor.
- ❷ Plug the other end of the power adapter into a standard AC power outlet.
- ❸ Plug the square end of the included USB cable to the USB port at the rear of the scanner.
- ❹ Plug the rectangular end of the USB cable to the USB port on the back of your computer.

**Note:** If there is another USB device connected to the computer, connect the scanner to an available USB port.

### Attention

Please **DO NOT POWER ON** the scanner now.

# Installing the Scanner

Please follow the step-by-step procedures described below to install the USB scanner.

## Attention

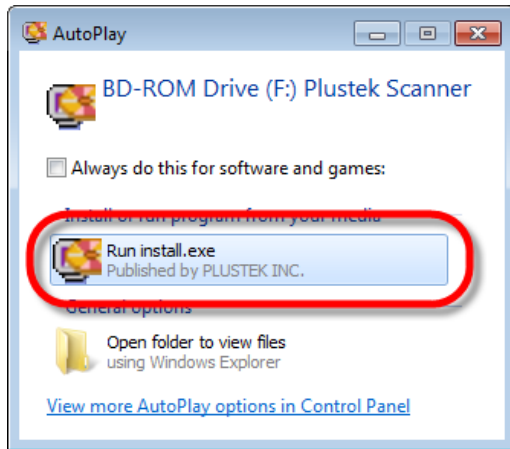
You may find the latest driver on our official website [www.plustek.com](http://www.plustek.com) -> Support & Download -> Drivers and Downloads

Do one of the following:

- Select product series and model
- Enter product model name

- [Installing Scanner on Windows](#)
- [Installing Scanner on Mac](#)

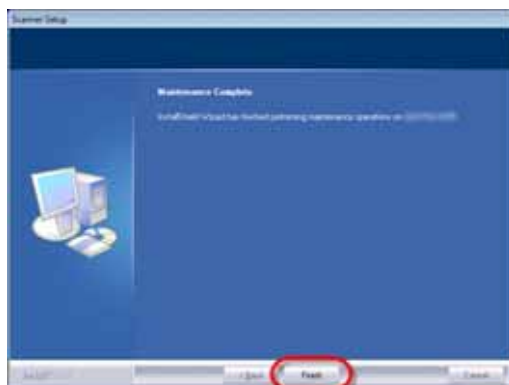
## Installing Scanner on Windows



1. Insert the Setup/Application CD-ROM, included with your scanner, into your CD-ROM drive. Click [Run install.exe] in the [AutoPlay] window. If the installation does not start automatically, browse your CD-ROM drive and manually run the [install.exe] file.





2. Follow the on-screen instructions to install all software that your new USB scanner requires.





3. After the software is installed, close all open applications and click on the [Finish] button to restart your computer.



4. Press the Power button to turn the scanner ON.

You will find a new QuickScan icon  if the installation was successful. The QuickScan icon , located on the Windows system tray, indicates if the scanner software is properly launched and the scanner and computer are communicating with each other.

Appearance	Status
	The QuickScan program has been successfully launched and the scanner is connected with the computer, ready to scan mages.
	The scanner is not connected with the computer.
No Display	You have chosen to terminate the QuickScan program, no matter the scanner is connected or disconnected with the computer.

<b>Attention</b>	<ol style="list-style-type: none"> <li>1. Please refer to <a href="#">QuickScan Settings and Preview Window Features</a> for more information about QuickScan software operation.</li> <li>2. You may install the bundled SilverFast software later, please refer to <a href="#">Bundled SilverFast Software Installation</a> for more information.</li> </ol>
------------------	----------------------------------------------------------------------------------------------------------------------------------------------------------------------------------------------------------------------------------------------------------------------------------------------------------------------------------------------------------------


## Installing Scanner on Mac

### Attention

- You do not have to install any scanner drivers when installing the scanner under Mac OS. The scanner drivers are already included within the SilverFast installation.
- Please refer to [Bundled SilverFast Software installation](#) for installing the bundled SilverFast software. You may refer to [Scan with the SilverFast Application](#) for software operation.
- Scanner panel quick launch button functions are not available on Mac OS.

If it is necessary, you may install the Mac driver from the Setup/Application CD-ROM. Insert the Setup/Application CD-ROM, included with your scanner, into your CD-ROM drive.



1. Double-click on the setup file [PlusTek Film Scanner] , and the Scanner Installer will start to guide you through the installation. Follow the on-screen guide in the installer window.



2. You will be prompted to enter your Mac administrator password in the way. Enter the password to continue the installation. **Note: Only the Mac administrator can perform the installation. Please make sure that you log in the Mac OS as an administrator.**



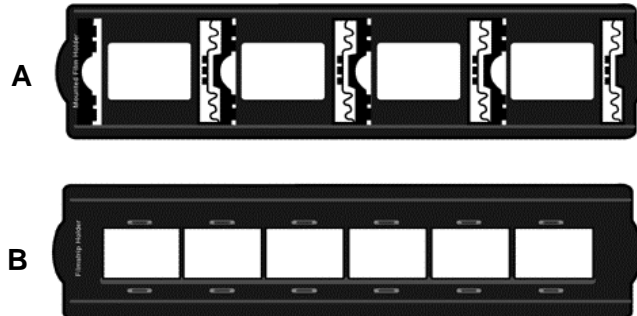
3. When the installation finishes, click on [Close] to exit the installer.

4. Press the Power button to turn the scanner ON.



# Film Holders

Two film holders are included in the package. They guarantee correct scanning results.



- A. For scanning 35mm mounted slides (max. 4 slides)
- B. For scanning 35mm filmstrips (max. 6 frames)

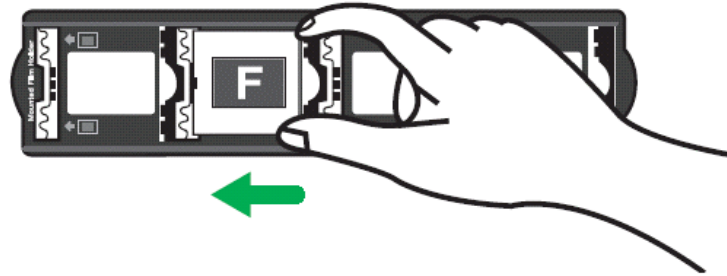
- [Using Mounted Slide Holder](#)
- [Using Filmstrip Holder](#)
- [Insert the Film Holder](#)

## Mounted Slide Holder

---

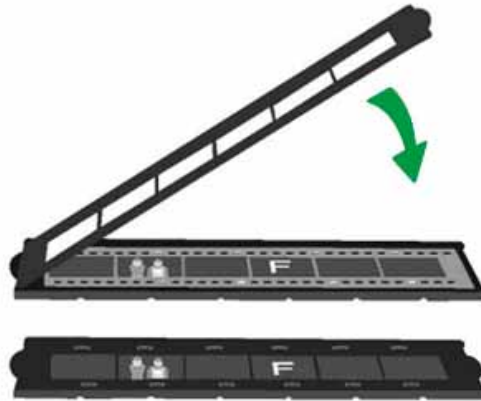
Insert mounted slides into slots with emulsion (non-glossy) side down.

There are arrows and illustrations on the frame of each slot. Please follow illustrations to insert mounted slides.



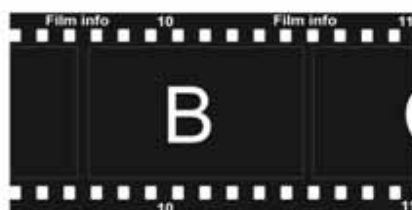
## Using Filmstrip Holder

Place filmstrip in the film holder with emulsion (non-glossy) side down, then snap the film holder cover closed.



- ⚠ For correct scan results, always turn the film with the top of the image facing towards the back of the scanner (where power cord and USB cord are located) and keep emulsion (non-glossy) side down.
- ⚠ There is text on the top and bottom of the film, such as manufacturer, frame numbers, film codes, batch numbers...etc. With the film oriented correctly as described above, this text should be read clearly (i.e., not backwards or up-side-down).

**Attention**



## Insert the Film Holder

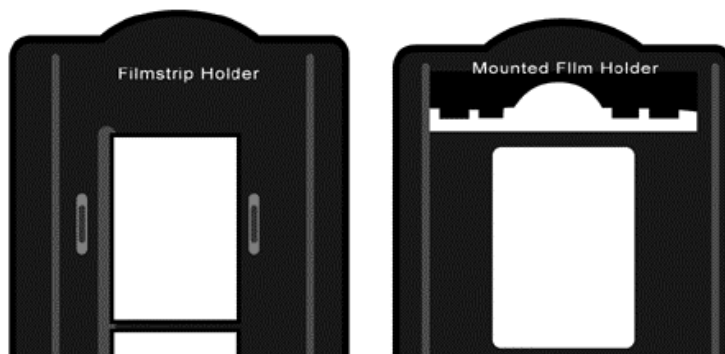
Insert the film holder into the scanner through dust cover. The film holder can be inserted from either side. The film holder will index at each frame using the notches on its side rails.

Please allow about 40 cm of space on both sides of the scanner to insert and remove the film holder.



### Attention


- You can feel the film holder stop in its index position. However, before performing scan, please gently push and pull the film holder to make sure the film holder is in correct position.
- On up side of the film holder you can see 'Mounted Slide Holder' or 'Filmstrip Holder'. Always keep this side up for correct scan results.

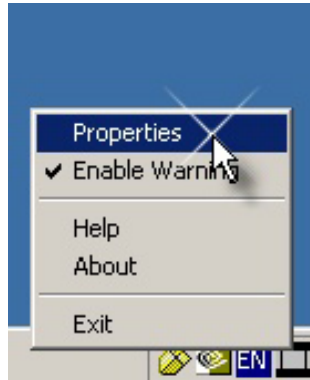


- The film holder should be able to be inserted in to the scanner smoothly. Do not push the film holder hard.

# QuickScan Settings and Preview Window Features

## QuickScan setting

Double click on the QuickScan icon located on the Windows system tray, or right click on the QuickScan icon , and from the menu that pops up, point to **[Properties]**.



- ☛ Select **[Scan Source]** (the material to be scanned), **[Purpose]** (the post-processing software to be saved or be processed), **[File Format]** (the format to be saved in), **[Destination Folder]** (the file saving path) and **[File name]** prefix (the film name, followed by 4-digits starting from 0000 for sequential scans).

- ☛ Check **[Preview]** window options to **[enable]** and/or **[confirm]** procedure.

- ☛ Select **[Auto Processing]** options.

Please notice that **[Color Enhancement]** feature is available in Negative mode only. **[Color Matching]** feature is available in Transparency mode only. **[Auto Density]** feature is available in both **[Transparency]** and **[Negative Film]** modes.

However, due to different color processing method, **[Auto Density]** feature and **[Color Matching]** feature cannot be applied simultaneously.

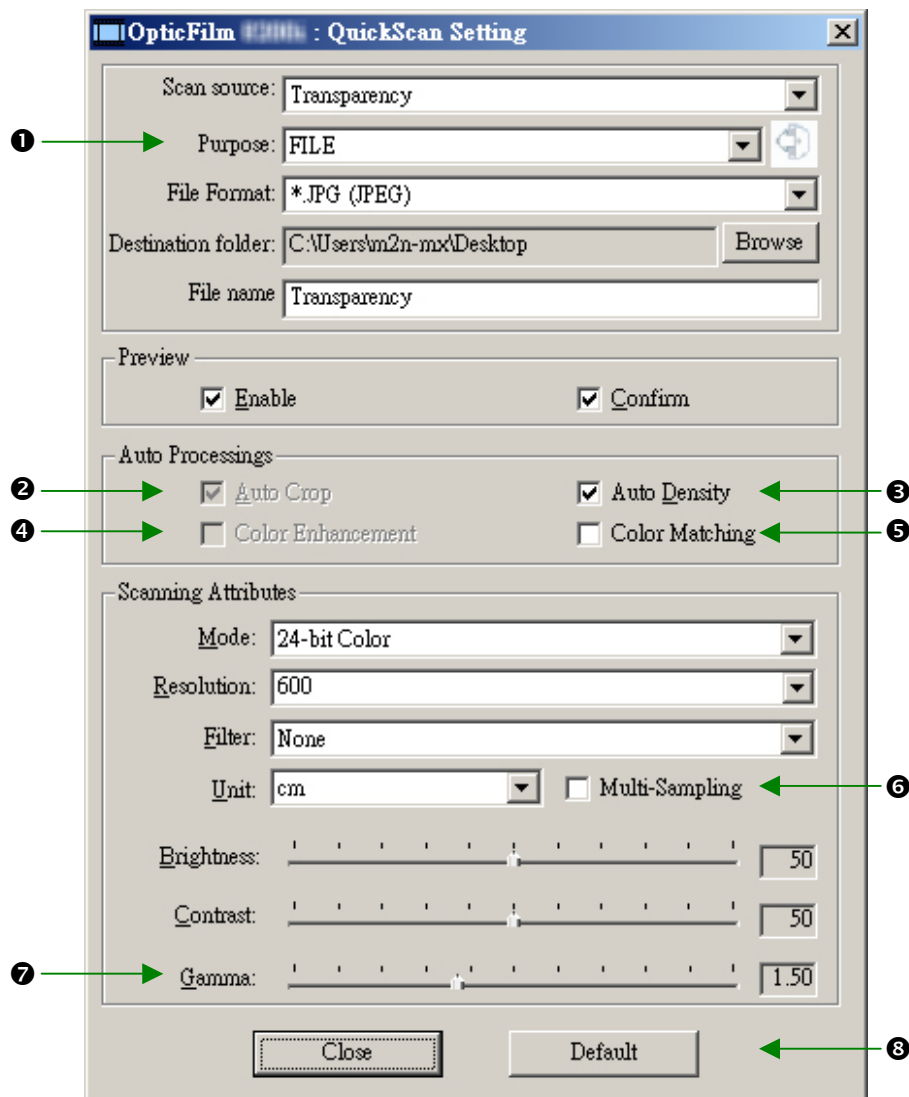
**[Auto Crop]** feature will apply automatically if **[Auto Density]** feature is checked.

- ☛ Select **[Scanning Attributes]** options:

You can alter scanning **[Mode]**, **[Resolution]**, **[Filter]**, **[Brightness]**, **[Contrast]** and **[Gamma]** settings.

- ☛ Click the **[Default]** button if you desire to return to the default settings.

- ☛ Click the **[Close]** button to save the final settings and exit the **[QuickScan Setting]** window.



## Important Scan Settings

### ❶ Purpose

This menu includes File, Page Manager, Photoshop functions, which allows you to determine which software you would like to use for the post-processing of the scanned image(s).

### ❷ Auto Crop

When this box is checked, the QuickScan program will identify the dimensions of the image you scanned and crop around the edges. The crop shape will be a square or rectangle and it will not trace the edges of oddly-shaped images.

### ❸ Auto Density

Checking this box automatically adjusts the Histogram to make the scanned image clearer. It does this by increasing the difference between color tones.

This feature is available in both Transparency and Negative Film modes.

#### ④ Color Enhancement

This feature is to compensate negative's underexposed Green and Blue channels.

If this feature is checked, pre-scan and scan time will noticeably increase.

This feature is available in Negative mode only.

#### ⑤ Color Matching

This feature provides a particular color matching technique to maintain colors consistency between your output and the original image.

This feature is available in Transparency mode only.

#### Attention

Due to different color processing method, [**Auto Density**] feature and [**Color Matching**] feature cannot be applied simultaneously. If [**Auto Density**] is checked, then [**Color Matching**] feature will be in gray-out status and unavailable. Likewise, if [**Color Matching**] is checked, then [**Auto Density**] feature will be in gray-out status and unavailable.

#### ⑥ Multi-Sampling

For fast scanning speed, uncheck Quality Mode to skip Multi-Sampling.

To minimize noise, the Multiple-Sampling function makes 4 scans during scan time, since the noise patterns changes each scans, the image is averaged together and noise cancel out if inconsistencies are present.

#### ⑦ Gamma

Image gamma is used to adjust the colors in the image that will be scanned into the computer. By adjusting the gamma, you can change the tonal range of the selected color channel. Gamma values are primarily a measure of the brightness of a color. The larger the gamma value, the brighter the color becomes.

#### ⑧ Default

Clicking this button resets the values of all settings to their default values.

## Preview window

This window is only operational if **[Enable]** and **[Confirm]** are both checked in **[Preview]** section. It will open when you press the **[QuickScan]** button.



**1 Source** - Tells the scanner the method you will use to scan images.

- **Transparency** - Use this mode for scanning transparency films.
- **Negative Film** - Use this mode for scanning negative films.



**2 Scan Mode** - Tells the scanner the type of document you are scanning. There are three settings to choose from:

- **8-bit grayscale** – scans in 256 shades of gray, giving black and white images.
- **16-bit grayscale** – scans in more than 65,000 shades of gray, improving the realism of b/w images.
- **24-bit Color** - scans in millions of colors for photo-realism. Choose this mode when scanning color slide or negatives.
- **48-bit Color** – scans in billions of colors for professional imaging requiring precise uniformity of color.



**3 Resolution** - Resolution is measured in dots per inch (dpi). The higher the resolution, the more detailed the image, and the more memory and drive space the image will use.



**4 Filter** - Filters help you improve your scans by allowing you to sharpen images as well as remove excessive dots and distortion.

**None**

**Average:** Determines the medium depth of an image and averages adjacent pixels to make images appear softer.

**Blur:** Lets you dull the edges within an image, and decreases the contrast by making dark edges lighter and light edges darker.

**Blur More:** Adds additional blurring.

**Sharpen:** Allows you to sharpen the edges within an image by making the edges in an image more distinct. The Sharpen filter also increases contrast by making dark edges darker and surrounding light edges lighter.

**Sharpen More:** Adds additional sharpening.

**Unsharpen:** Sharpens the edges in an image to remove the blurriness.



**5 Brightness** - This is the amount of light that is concentrated onto a document while it is being scanned.



**6 Contrast** - Contrast adjusts the tonal range of an image by lowering mid-tone values and increasing values for high and low tones.



**7 Scan** – Scans and saves the transparency slide or negative film using the current settings.



**8 PreScan** – Performs a prescan to preview the transparency slide or negative film.



**9 Exit** – Exits the program.



**10 Help** – Opens the Online Help.

Once you have confirmed that all settings are to your satisfaction, please click on the **[Scan]** button to perform the final scan and save it to your hard drive.

# Bundled SilverFast Software Installation

Your scanner comes with the advanced and feature rich scanning application SilverFast. You do not have to install any scanner drivers when installing the scanner under Mac OS. The scanner drivers are already included within the SilverFast installation.

## Attention

- It takes about **10 mins** to install SilverFast software.
- You have to create and login with a **MySilverFast account**.
- Please make sure there is **internet connection** while you're installing SilverFast software.

- [Request for SilverFast License](#)
- [Installing SilverFast Software](#)


## Request for SilverFast License

1. Visit the website [www.silverfast.com/activation-plustek](http://www.silverfast.com/activation-plustek) and follow the instructions. You will need your scanner 12-digit hardware serial number.

Request a free *SilverFast* license  
for your **plustek** scanner.



• OpticFilm 8300i




• OpticFilm 120 Pro

Information on your Plustek scanner

Please give us some information on your Plustek scanner:

- 1 Please select your scanner model
- 2 Please enter Hardware serial number
- 3



(You can find this serial number on the activation flyer and on the back of your scanner.)

\*The webpage content may subject to change without prior notifications.

- 1 Select your scanner model.
- 2 Enter the scanner serial number.
- 3 Click the [Check] button.

2. Enter the necessary information to create a MySilverFast account. You have to login to the SilverFast software with this MySilverFast account later.

## Request a free *SilverFast* license for your **plustek** scanner.

Please register at MySilverFast to receive your free  
SilverFast license

Do you already have an account? [Log in here](#)

Please make sure that your hardware serial number is correct and then fill out this form to set up a MySilverFast account. You can manage and download the software in your MySilverFast user account.

Hardware Serial Number:  [Edit Hardware Serial Number](#)

First Name	Last Name
Company (optional)	
Please select your country: <input type="button" value="v"/>	

[Login data for MySilverFast and SilverFast 9:](#)

Note: The access data you enter here is identical to those for your software.

Email Address
Password
Confirm your Password

[Show password](#)

\*The webpage content may subject to change without prior notifications.

3. If the registration is completed, you will receive an email to inform you that the license has already been added to your MySilverFast account.

License added to your MySilverFast Account  



LaserSoft Imaging <my@silverfast.de>

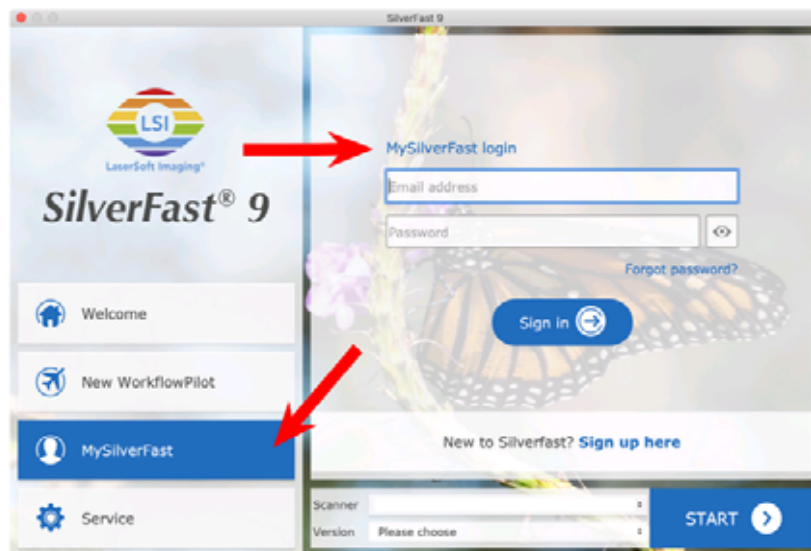
 to me

# MySilverFast



Dear SilverFast Customer .

congratulations on your new SilverFast software. Your new SilverFast license has been added to your [MySilverFast Account](#) and will be available on your computer when you open SilverFast 9 the next time.



You probably already know that SilverFast 9 works on the basis of a MySilverFast-Account instead of a serial number. On the [MySilverFast-Portal](#) you can manage your licenses and download the software. SilverFast 9 is activated automatically when you log into your MySilverFast-Account in the MySilverFast-Tab of the SilverFast 9 Welcome Screen on your computer.

If you have any questions on MySilverFast, please check our [MySilverFast-Guide for help](#).

Enjoy your new SilverFast 9 software!

With best wishes for brilliant images

Your SilverFast Team

LaserSoft Imaging AG, Luisenweg 6-8, 24105 Kiel, Germany, Phone: +49 (0)431-56009-0

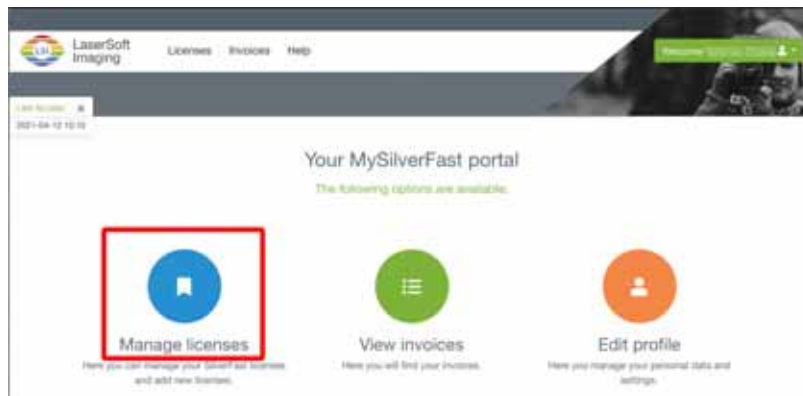
[www.SilverFast.com](http://www.SilverFast.com) | [www.PrinTao8.com](http://www.PrinTao8.com) | [www.Picture.Plugins.com](http://www.Picture.Plugins.com)

## Installing SilverFast Software

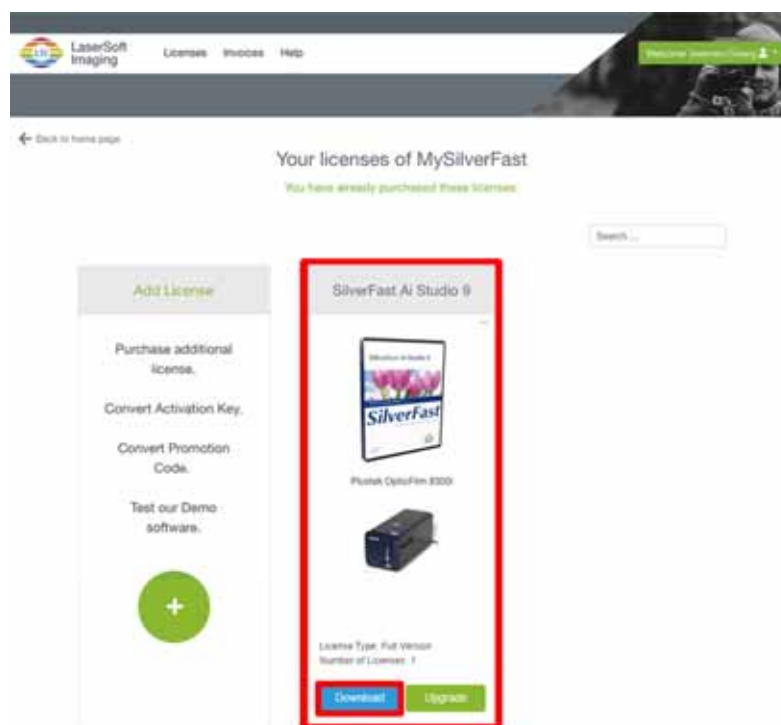
You can install SilverFast from your MySilverFast portal:

You may download the SilverFast software from your MySilverFast account.

1. Log in to your [MySilverFast portal](#) and click [**Manage licenses**]



2. Click [**Download**] button to download the SilverFast software.



3. When the download is completed, run the installer and follow the on-screen instructions. After the installation finishes, click on [Done] to exit the installer.

**Attention**

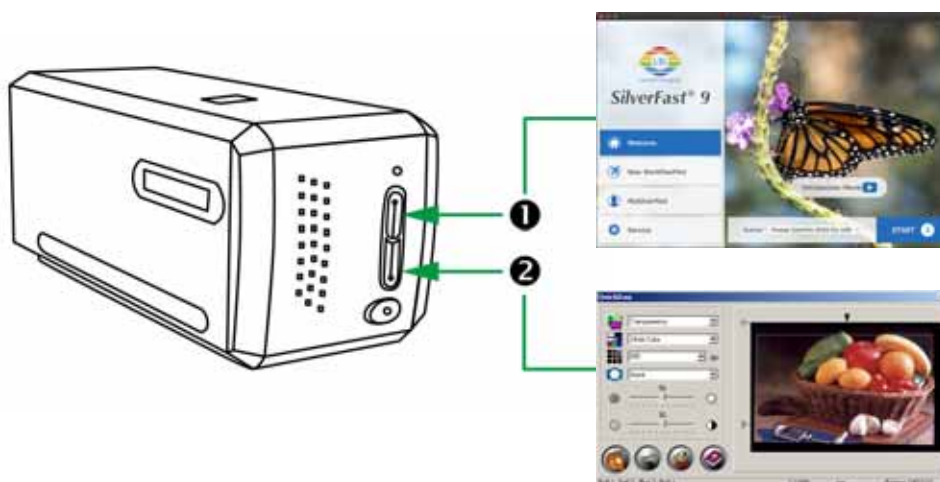
# Operating the Scanner

## Attention

- Quick launch button functions are only available on Windows OS.
- For Mac OS X user, please launch the SilverFast launcher using the SilverFast shortcut on the Desktop.

There are different ways to operate the scanner:

- ❶ Using SilverFast Launcher by pressing [IntelliScan] button. This stand alone program allows you to perform advanced scanning features. For further information, please refer to SilverFast User's Manual.
- ❷ Using QuickScan feature by pressing [QuickScan] button. The QuickScan Setting program is automatically installed as your scanner software.



- ❶ [Using \[IntelliScan\] Button](#)
- [Scan with the SilverFast Application](#)
- ❷ [Using \[QuickScan\] Button](#)

## ① Using [IntelliScan] Button

The [IntelliScan] button enables you to activate bundled SilverFast, which performs advanced scan features, such as Dust and Scratch Removal, Grain and Noise Elimination, Negative Optimization...etc.

### Attention

- This button is only available when the SilverFast software is installed on your computer.
- For detailed settings and features about SilverFast, please refer to SilverFast User's Manual.
- For Mac OS X user, please launch the SilverFast launcher using the SilverFast shortcut on the Desktop.

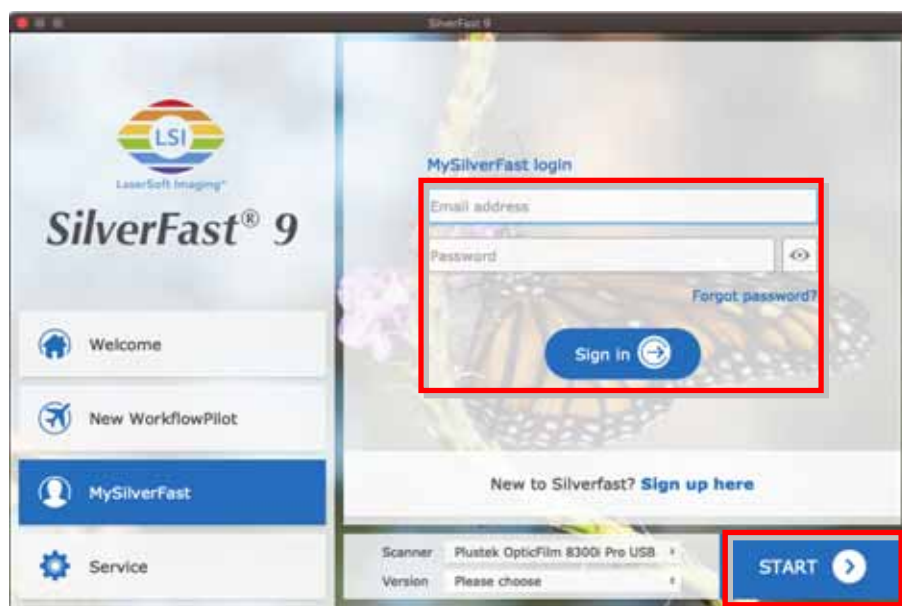


## Scan with the SilverFast Application

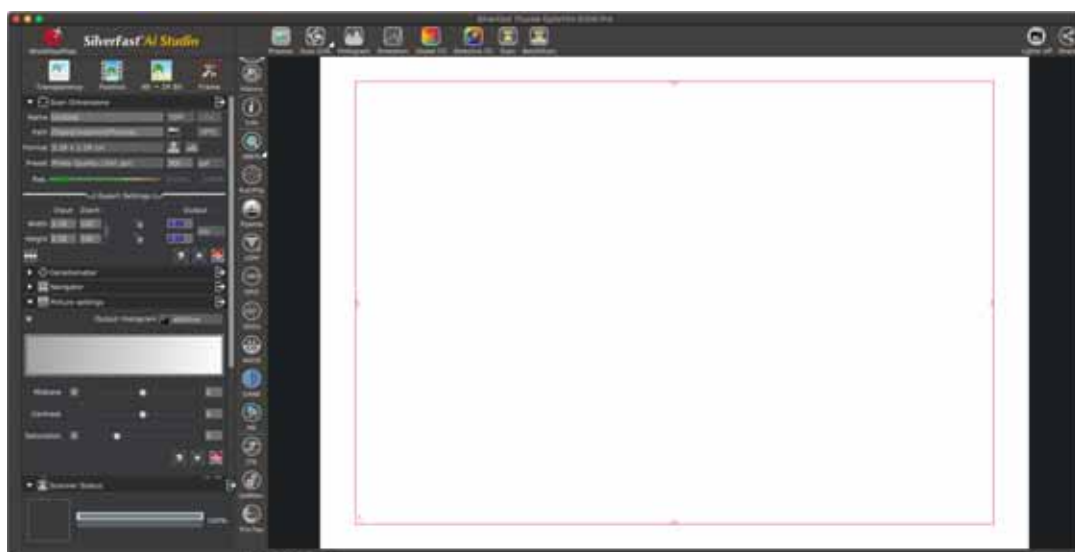
Launch the SilverFast launcher using the SilverFast shortcut on the Desktop. **Login to the SilverFast software with your MySilverFast account**, then click on **[Start]** to launch the program.

### Attention

Please make sure there is **internet connection** while login to the SilverFast software.



Adjust the scan settings. Please refer to the SilverFast manual for more information about available scan settings.



## ② Using [QuickScan] Button

The [QuickScan] button enables you to conveniently scan images and save them automatically to the album. Simply press the [QuickScan] button on the front of your scanner and the scanner will start scanning your transparencies or negatives. Before performing your first scan via the [QuickScan] button, you are recommended to configure the QuickScan settings to your needs and preferences first.

### Attention

QuickScan software is only available on Windows OS, Mac OS X is not supported.



# Appendix A: Troubleshooting

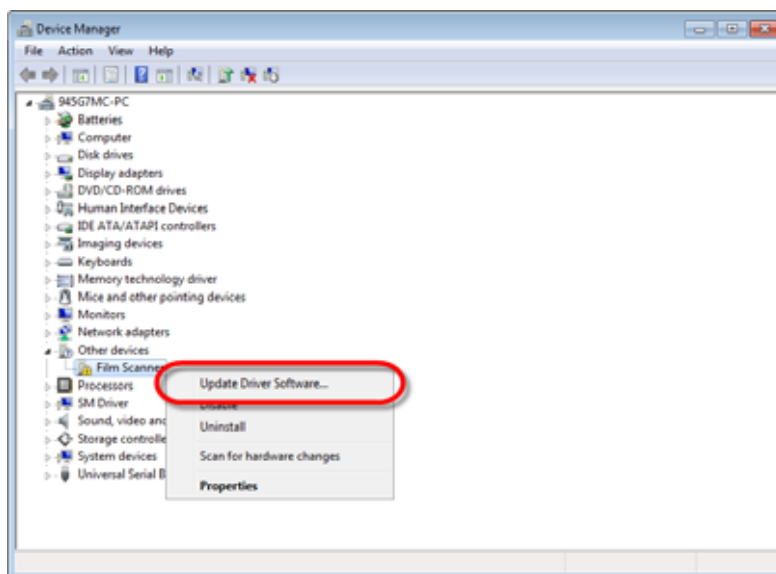
## Scanner Connection

The first step to take when troubleshooting connection problems with your scanner is to check all physical connections.

### Manually Installing the Software

**For Windows OS: If you are facing difficulty in installing the scanner driver, please try manually installing the software.**

1. Please open [Start] > [Control Panel] > [System] > [Hardware] > [Device Manager]. In the [Device Manager] window, right-click on this scanner under [Other devices] and select [Update Driver Software] from the pop-up menu.



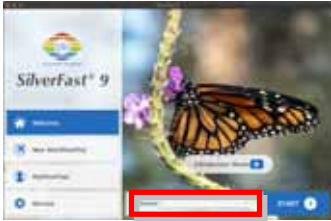
**Attention**








2. Click [Browse my computer for driver software] in the window that appears, and click the [Browse] button. In the [Browse For Folder] window, select the folder that contains this scanner's driver and click the [OK] button to return to the previous screen. Click the [Next] button and click [Install this driver software anyway] if the [Windows Security] window appears.
3. Browse your CD-ROM drive and manually run the [install.exe] file. Click on the [Yes] button if the [User Account Control] dialog pops up. Follow the on-screen instructions to install all software that your new USB scanner requires.




## Scanning Problems

Most problems are easily solved, and some of the most common questions and their recommended solutions are listed below.

**\*Always make sure that you are using the latest software of Plustek and SilverFast.**

Symptom	Cause & Solution
<p>The Scanner source is blank</p> 	<p>🔊 <b>The scanner is not detected by the OS.</b> Please refer to the solutions of the following “<b>The scanner cannot be found</b>”.</p>
<p>The scanner cannot be found</p>	<p>🔊 <b>The USB cables are not connected properly</b> Make sure that the cables are connected tightly and to the proper port.</p> <p>🔊 <b>The USB cable might be too long</b> Please use the USB cable that comes with your scanner.</p> <p>🔊 <b>The scanner’s power cord is not connected properly</b> Make sure that the AC adapter is connected to an outlet. If the scanner is connected to a Surge Protector, make sure that the Surge Protector is turned on.</p> <p>🔊 <b>The scanner is not power on.</b> Press the Power button to turn the scanner ON.</p> <p>🔊 <b>Windows didn’t detect the scanner</b> 1) Please open [Start] &gt; [Control Panel] &gt; [System] &gt; [Hardware] &gt; [Device Manager]. 2) Please check if your scanner is properly listed under [Imaging Devices]. If it is not listed there or the device icon has an exclamation mark, please refer to “<b>Manually Installing the Software</b>” to install the device drivers.</p>

The scanned image looks grainy on the screen	<p> <b>Your video mode is not set to show more than 256 colors</b> We recommend that you set your video mode to 16 bits per pixel (65536 colors) or higher. Please consult your video card, computer or Windows documentation to change the video mode.</p>
The scanner scans very slowly	<p> <b>You are running other applications in the background</b> Close all the other applications that are running in the background.</p> <p> <b>You are scanning at a high resolution (DPI)</b> Reduce the resolution.</p>
The image looks good in the software that came with the scanner but it doesn't look good when I export the image to another program	<p> <b>Different imaging programs use different Monitor Gamma settings</b> Change the Monitor Gamma settings in either of the programs so that they match. Please consult the help files for each program to find out how to adjust the Monitor Gamma.</p>
The image looks good on screen but very dark when printed	<p> <b>The Monitor Gamma Settings or the scanner brightness settings are not set properly</b> 1) Change the Monitor Gamma to a value between 1.0 and 1.5. Please consult your help file for information on how to adjust the Monitor Gamma.</p> <p>2) Adjust the brightness control in the TWAIN window before scanning.</p> <p> <b>The printer brightness setting is not set properly</b> Adjust the brightness in the printer. Some printers allow you to change the brightness settings. Please consult your printer documentation.</p>
There is a grinding or rattling noise at the beginning of each scan	<p> <b>The scanner engages the gears and it initializes itself before scanning</b> This noise is normal to the operation of the scanner.</p>

<p>A “Disk is full” error is displayed when I click on the scan button</p>	<p> <b>Your computer is running low in resources. Your computer hard disk drive does not have enough space to process the image. This may be because you are scanning at too high of a resolution</b></p> <p>Obtain a larger hard disk or rescan at a lower resolution.</p>
<p>A “Disk I/O error” message is displayed</p>	<p> <b>This error is caused if the hard disk drive does not have enough space available to process the image</b></p> <p>Make some space available in the hard disk drive by deleting any programs or files that you do not need</p> <p> <b>Your hard disk drive might be heavily fragmented or it might contain some bad sectors</b></p> <p>Run the Scan Disk utility that came with your Windows computer. Please consult your computer documentation or the Windows help files on how to run the Scan Disk Utility</p>

## Appendix B: Specifications<sup>2</sup>

OpticFilm 8100	
Image Sensor	CCD
Light Source	LED
Hardware Resolution	7200 dpi
Scan Modes	Color: 48-bit input, 24/48-bit output Grayscale: 16-bit input, 8/16-bit output
Dynamic Range	3.6
Scanning Speed	3600 dpi: Approx. 36 sec (Multi-Sampling ON) 7200 dpi: Approx. 113 sec (Multi-Sampling ON)
Scanning Area (W x L)	36.8 mm x 25.4 mm (1.45" x 1")
Preview Speed	Negative Film: Approx. 8 sec (Multi-Sampling ON) Positive Film: Approx. 8 sec (Multi-Sampling ON)
Action Button	IntelliScan, QuickScan
Power Supply	15 Vdc / 1.0 A
Interface	USB 2.0
Net Weight	1.6 Kgs (3.5 Lbs)
Dimensions (W x D x H)	120 x 272 x 119 mm (4.73" x 10.7" x 4.7")
OS	Windows 7 / 8 / 10 / 11 Mac 10.13.x and later
Hardware Requirements	Windows PC & Mac 2 GHz Processor or faster 2 GB RAM main memory (4 GB RAM recommended) 10 GB free space on the hard disk drive CD/DVD drive and Internet connection

<sup>2</sup> Hardware specifications may change at any time without prior notice.

<b>OpticFilm 8200i SE</b>	
Image Sensor	CCD
Light Source	LED
Hardware Resolution	7200 dpi
Scan Modes	Color: 48-bit input, 24/48-bit output Grayscale: 16-bit input, 8/16-bit output
Dynamic Range	3.6
Infrared	Built-in
Scanning Speed	3600 dpi: Approx. 36 sec (Multi-Sampling ON) 7200 dpi: Approx. 113 sec (Multi-Sampling ON)
Scanning Area (W x L)	36.8 mm x 25.4 mm (1.45" x 1")
Preview Speed	Negative Film: Approx. 8 sec (Multi-Sampling ON) Positive Film: Approx. 8 sec (Multi-Sampling ON)
Action Button	IntelliScan, QuickScan
Power Supply	15 Vdc / 1.0 A
Interface	USB 2.0
Net Weight	1.6 Kgs (3.5 Lbs)
Dimensions (W x D x H)	120 x 272 x 119 mm (4.73" x 10.7" x 4.7")
OS	Windows 7 / 8 / 10 / 11 Mac 10.13.x and later
Hardware Requirements	Windows PC & Mac 2 GHz Processor or faster 2 GB RAM main memory (4 GB RAM recommended) 10 GB free space on the hard disk drive CD/DVD drive and Internet connection

<b>OpticFilm 8200i Ai</b>	
Image Sensor	CCD
Light Source	LED
Hardware Resolution	7200 dpi
Scan Modes	Color: 48-bit input, 24/48-bit output Grayscale: 16-bit input, 8/16-bit output
Dynamic Range	3.6
Infrared	Built-in
Scanning Speed	3600 dpi: Approx. 36 sec (Multi-Sampling ON) 7200 dpi: Approx. 113 sec (Multi-Sampling ON)
Scanning Area (W x L)	36.8 mm x 25.4 mm (1.45" x 1")
Preview Speed	Negative Film: Approx. 8 sec (Multi-Sampling ON) Positive Film: Approx. 8 sec (Multi-Sampling ON)
IT8 Target	Included for color accuracy
Action Button	IntelliScan, QuickScan
Power Supply	15 Vdc / 1.0 A
Interface	USB 2.0
Net Weight	1.6 Kgs (3.5 Lbs)
Dimensions (W x D x H)	120 x 272 x 119 mm (4.73" x 10.7" x 4.7")
OS	Windows 7 / 8 / 10 / 11 Mac 10.13.x and later
Hardware Requirements	Windows PC & Mac 2 GHz Processor or faster 2 GB RAM main memory (4 GB RAM recommended) 10 GB free space on the hard disk drive CD/DVD drive and Internet connection

## Appendix C:

# Customer Service and Warranty

If you encounter problems with your scanner, please review the installation instructions and troubleshooting suggestions contained in this guide.

Visit our website [www.plustek.com](http://www.plustek.com) for more customer service information. To avoid delays, please have the following information available:

- 🔧 **Scanner name and model number**
- 🔧 **Scanner serial number (located at rear of scanner near port connectors)**
- 🔧 **A detailed description of the problem**
- 🔧 **Your computer manufacturer and its model number**
- 🔧 **The speed of your CPU**
- 🔧 **Your current operating system and BIOS (optional)**
- 🔧 **Name of software package(s), version or release number and manufacturer of the software**
- 🔧 **Other USB devices installed**

## Service & Support Information (For EU country only)

---

Where appropriate, the period of availability of spare parts and the possibilities of upgrading products information. Please ask local distributors and suppliers for spare parts information and product upgrade information.

Information requested by relevant Implementing Measure. Please ask local distributors and suppliers for the related information of Implementing Measure test report.

Do not dispose anything of products before you ask local distributors and suppliers to get correct information for decreases of environmental impact with right methods and procedures.

If you want to disposals the product and/or an accessory, please ask local distributors and suppliers to get the contact information of nearest disposal manufactures.

If you have any maintenance inquiry, please ask local distributors and suppliers to get the contact information of nearest maintenance center in order to extend the product usage life time.

If you want to maintain and clearance the product, please ask local distributors and suppliers to get the right information of nearest stores.

## Statement of Limited Warranty

---

This Statement of Limited Warranty applies only to the options you originally purchase for your use, and not for resale, from an authorized reseller.

The manufacturer warranty includes all parts and labor, and is not valid without the receipt of original purchase. To obtain warranty service, you may contact the authorized dealer or distributor, or visit our website to check out the available service information, or send a request via E-mail for further help.

If you transfer this product to another user, warranty service is available to that user for the remainder of the warranty period. You should give your proof of purchase and this statement to that user.

We warrant that this machine will be in good working order and will conform to its functional descriptions in the documentation provided. Upon provision of proof of purchase, replacement parts assume the remaining warranty of the parts they replace.

Before presenting this product for warranty service, you must remove all programmes, data and removable storage media. Products returned without guides and software will be replaced without guides and software.

This Limited Warranty service does not provide for carry-in exchange when the problem results from accident, disaster, vandalism, misuse, abuse, unsuitable environment, programme modification, another machine or non-vendor modification for this product.

If this product is an optional feature, this Limited Warranty applies only when the feature is used in a machine for which it was designed.

If you have any questions about your Limited Warranty, contact the approved retailer from whom you bought the product or the manufacturer.

THIS LIMITED WARRANTY REPLACES ALL OTHER WARRANTIES, EXPRESS OR IMPLIED, INCLUDING, BUT NOT LIMITED TO, THE IMPLIED WARRANTIES OF MERCHANTABILITY AND FITNESS FOR A PARTICULAR PURPOSE. HOWEVER, SOME LAWS DO NOT ALLOW THE EXCLUSION OF IMPLIED WARRANTIES. IF THESE LAWS APPLY, THEN ALL EXPRESS AND IMPLIED WARRANTIES ARE LIMITED IN DURATION TO THE WARRANTY PERIOD. NO OTHER WARRANTIES APPLY AFTER THAT PERIOD.

Some jurisdictions do not allow limitations on how long an implied warranty lasts, so the above limitation may not apply.

Under no circumstances are we liable for any of the following:

- ☛ Third party claims against you for losses or damages.
- ☛ Loss of, or damage to, your records or data; or
- ☛ Economic consequential damages (including lost profits or savings) or incidental damages, even if we are informed of their possibility.

Some jurisdictions do not allow the exclusion or limitations of incidental or consequential damages, so the above limitation or exclusion may not apply to you.

This Limited Warranty gives you specific legal rights, and you may also have other rights that vary from jurisdiction to jurisdiction.

To obtain the warranty service, you may:

- 🔧 contact the authorized dealer or distributor.
- 🔧 visit our website to check out the up-to-date service.
- 🔧 send a request via E-mail for further help.

## **FCC Radio Frequency Statement**

---

This equipment has been tested and found to comply with the limits for a Class B digital device, pursuant to part 15 of the FCC rules. These limits are designed to provide reasonable protection against harmful interference in a residential installation.

This equipment generates, uses and can radiate radio frequency energy and, if not installed and used in accordance with the instructions, may cause harmful interference to radio communications. However, there is no guarantee that interference will not occur in a particular television reception (which can be determined by turning the equipment off and on), the user is encouraged to try to correct the interference by one or more of the following measures:

- 🔧 Reorient or relocate the receiving antenna.
- 🔧 Increase the separation between the equipment and receiver.
- 🔧 Connect the equipment to an outlet on a circuit different from that which the receiver is connected.
- 🔧 Shielded interconnect cables and shielded power cord which are supplied with this equipment must be employed with this equipment to ensure compliance with the pertinent RF emission limits governing this device.
- 🔧 Consult the dealer or an experienced radio/TV technician for help if the conditions persist.
- 🔧 Changes or modifications not expressly approved by the manufacturer or authorized service center could void the user's authority to operate this equipment.