


Install the Network Twain Finder on Windows PC

If you want to use the TWAIN interface of the eScan, you have to install the Network Twain Finder on your Windows PC.



Attention

1. The **Network Twain Finder** program is only available on Windows PC.
2. The eScan **Version** should be 1.1.7 or higher.
3. The eScan and your Windows PC must be on the same segment of the network.

eScan preparation

1. Tap on **System Settings** from the Main Menu to enter the System Settings interface.

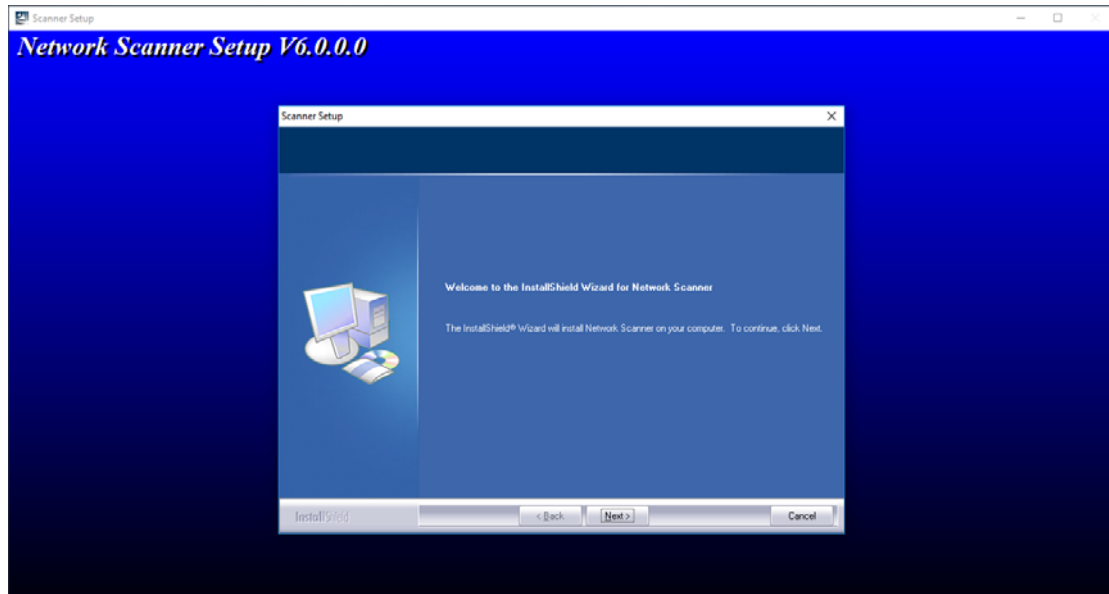



2. Tap on **General** tab on the lower-left to enter the General Settings page. Activate the **TWAIN** function and the floating **TWAIN** button appears.

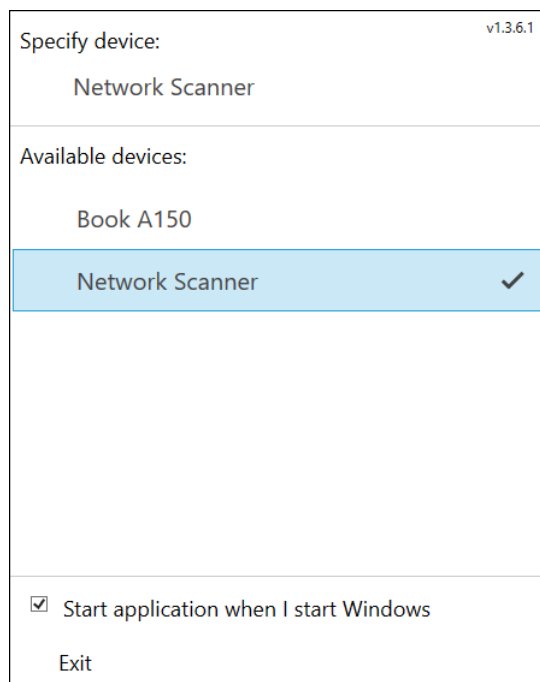


On your Windows PC

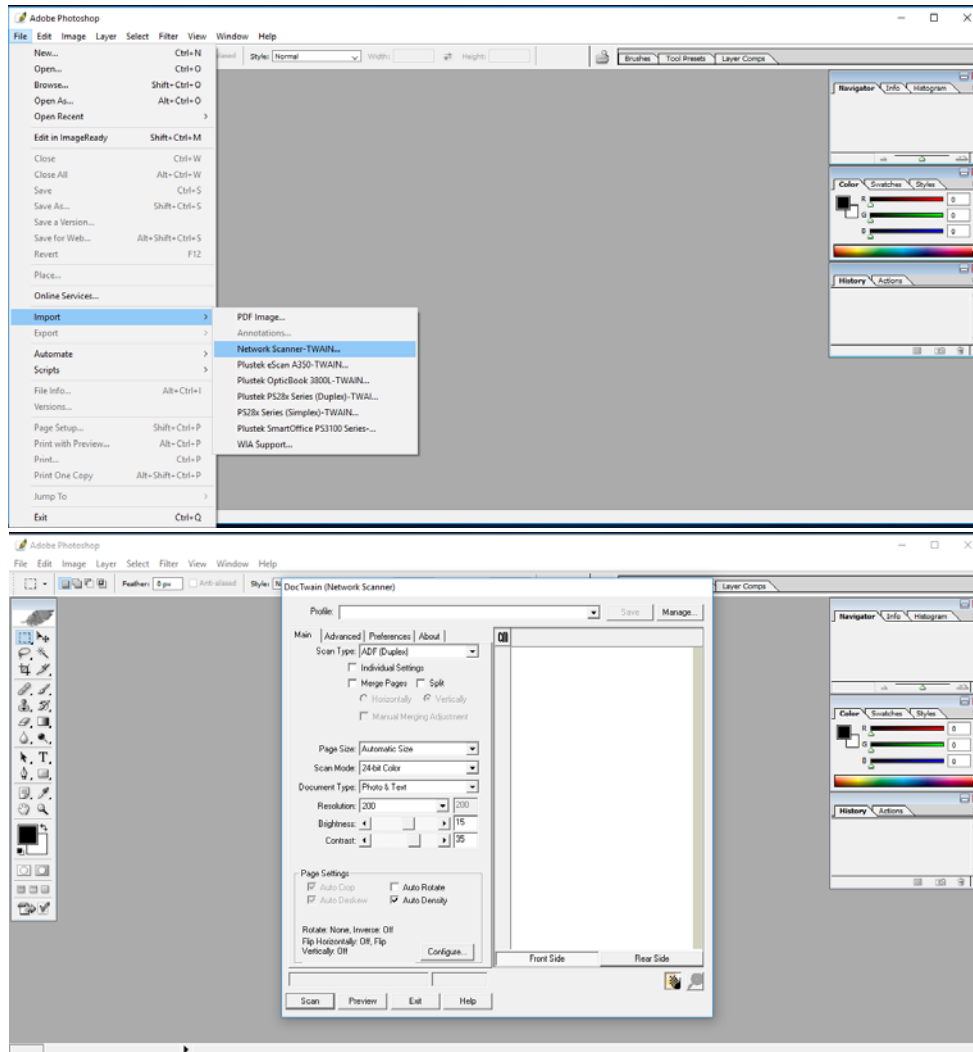
1. Download the **Network_Twain_Finder.zip** from our official website.
2. Unzip the file and install the **Network Twain Finder** program on your Windows PC. Follow the on-screen instructions to complete the installation.




3. Click the Network Scanner icon  on the system tray.
4. Double-click on the desired network scanner, and the check mark appears on the right. Now the network scanner is connected with your Windows PC.



- Use TWAIN compatible program to do your scanning projects. For example, select **File > Import > Network Scanner-TWAIN** in Adobe Photoshop to display TWAIN interface.



If you have more than one eScan network scanner, you may modify the device **Name** by tapping on the  button.

