



Scan me



Scan me

1 Install software and connect the scanner

Step 1 Connecting

Connect scanner to computer.

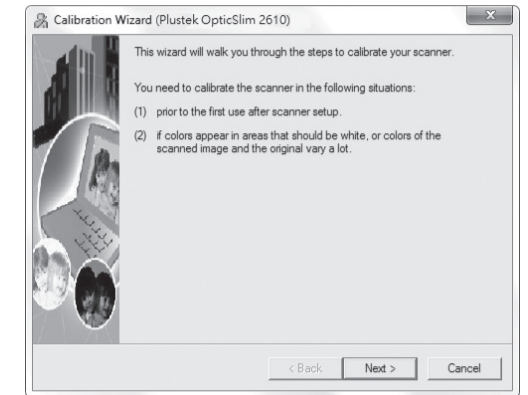
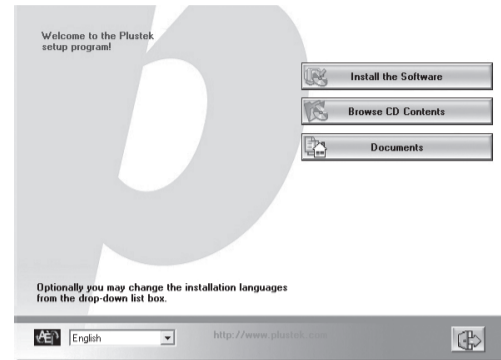
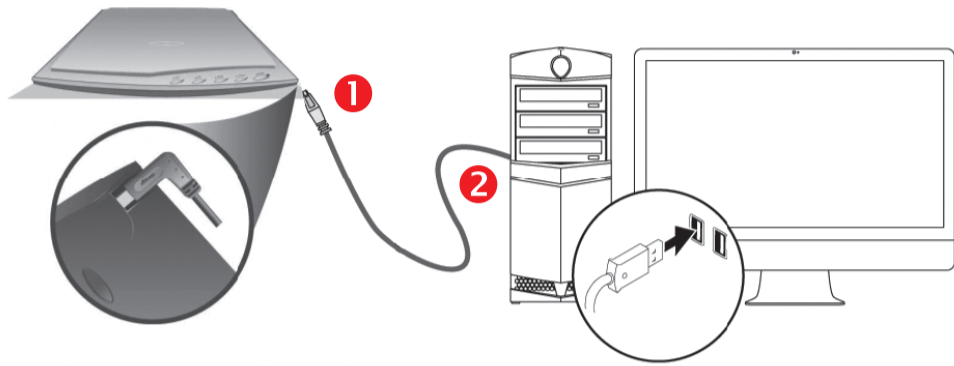
Step 2 Installing

Insert Setup/Application disk into DVD-ROM driver.
Note: If your computer does not have a DVD-ROM please download driver from Plustek website.
www.plustek.com → Support & Downloads → Drivers & Downloads → Search for OpticSlim 2610

Follow on-screen instructions to install all software.

Step 3 Calibrating

After the software is installed, you will be prompted to perform the scanner calibration.

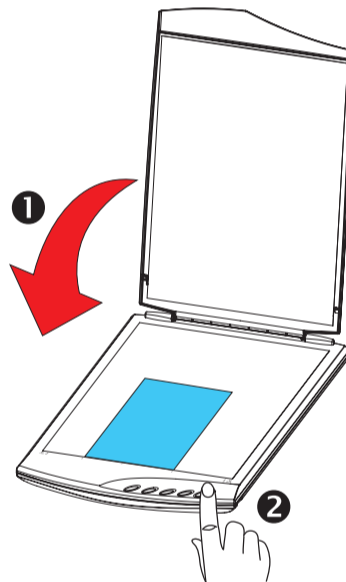
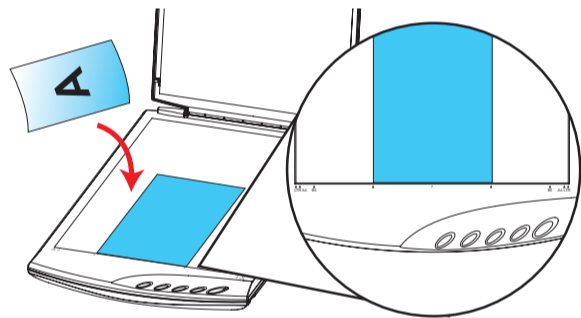


2 Scan a document & book

Scan Document

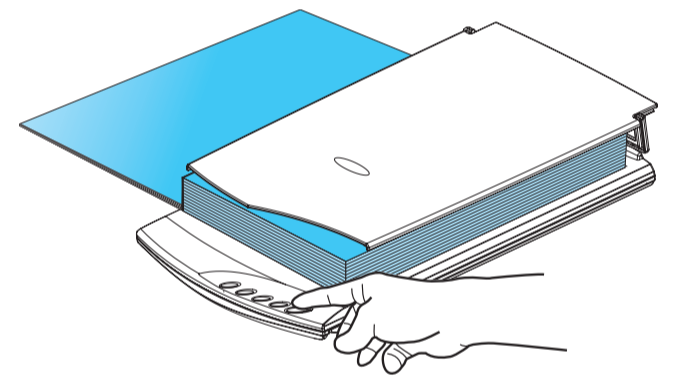
1. Place documents in scanner

2. Close cover and press scan button

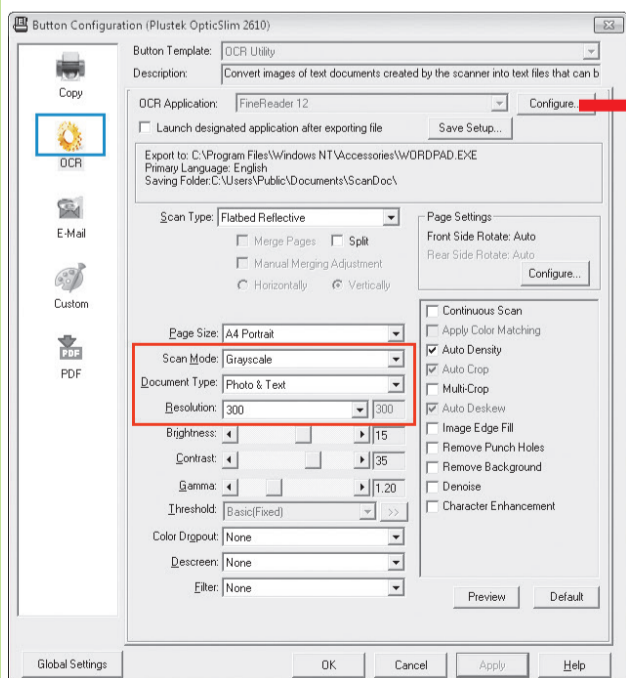


Scan Book

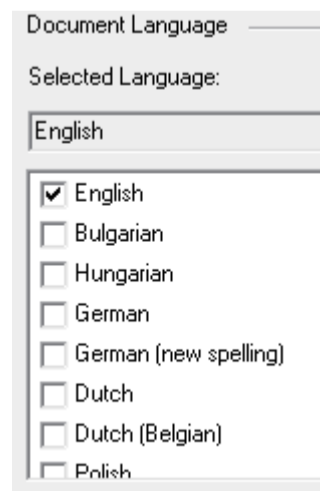
1. Place the book on the glass and press scanner button.



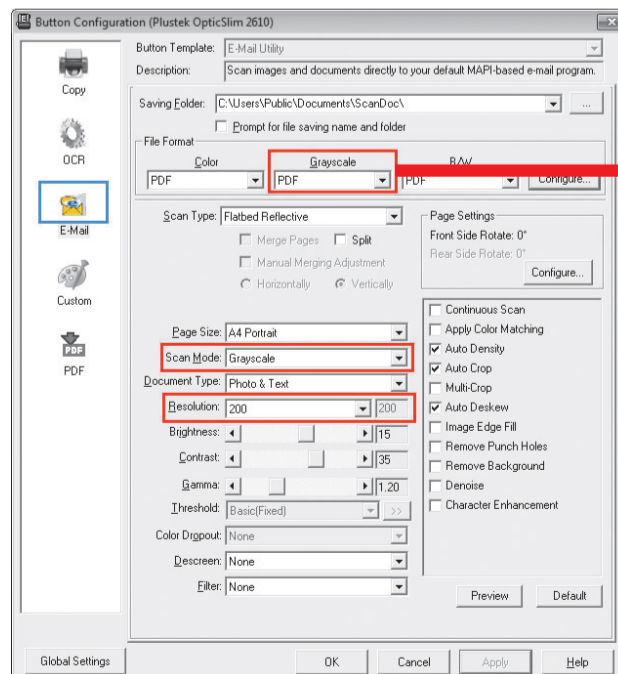
OCR Button



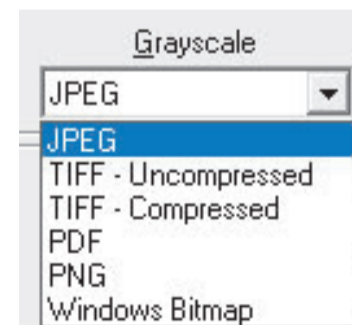
Select the desired OCR language.



Email Button



Select desired file format from the dropdown list. This selection should match with the selection of Scan Mode.



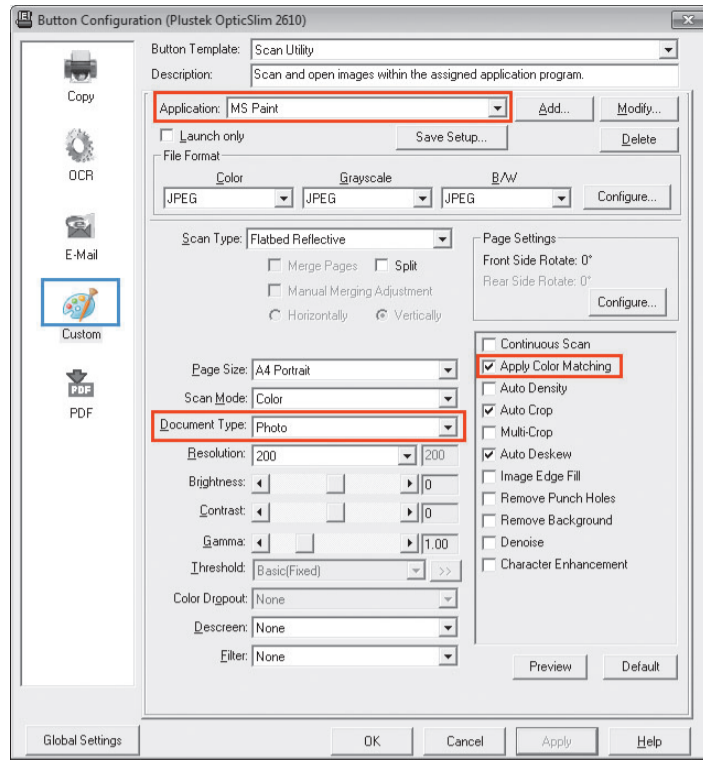
Useful Tips:

For a multi-page document please check the box **Continuous Scans**. You may click **Global Settings** > **Scan Continuously** to adjust the time interval.

Useful Tips:

1. File Format (Default) : **PDF**
 (Note: Click Configure button to activate Generate one TIFF / PDF file for all pages)
2. Scan Mode (Default): **Grayscale**
3. Recommended Resolution: **200 dpi**

Custom Button (Graphics)

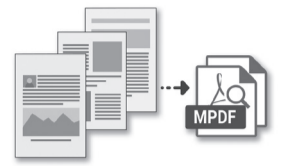
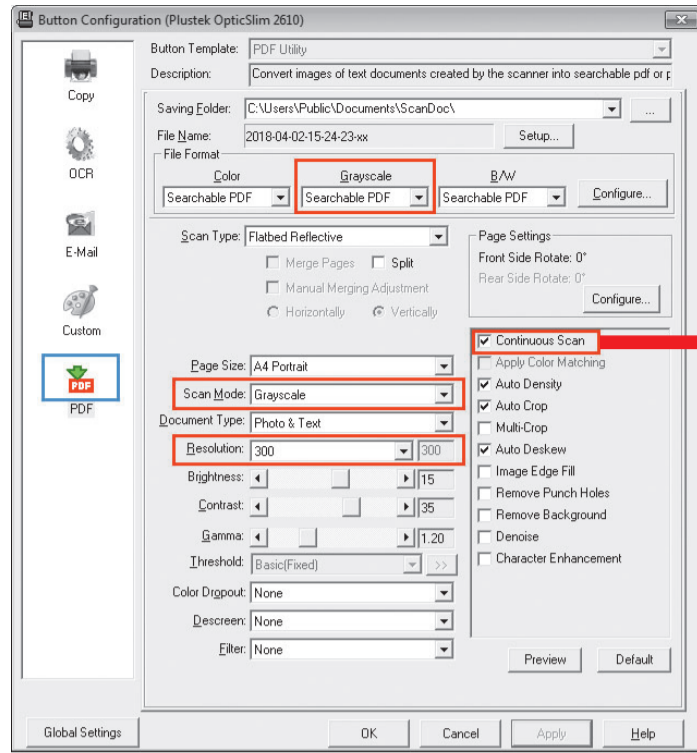


Useful Tips:

1. Select or add desired application.
2. Document Type (Default) : **Photo**
3. Tick the check box of **Apply Color Matching**. The purpose of Color Matching is to get a consistent color. This option uses the default parameters (sRGB profile) to adjust the colors of the image.

Please scan the QR code in the title bar to see more software video tutorials.

PDF Button



Useful Tips:

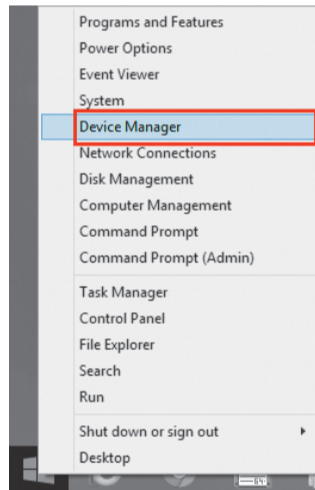
1. File Format (Default) : **Searchable PDF**(If you don't want to take time for the OCR purpose, you may select PDF from the dropdown list.)
2. Scan Mode (Default) : **Grayscale**
3. Recommended Resolution: **300 dpi**
4. If you want to scan a multi-page document, please tick the check box of **Continuous Scan**.

Troubleshooting

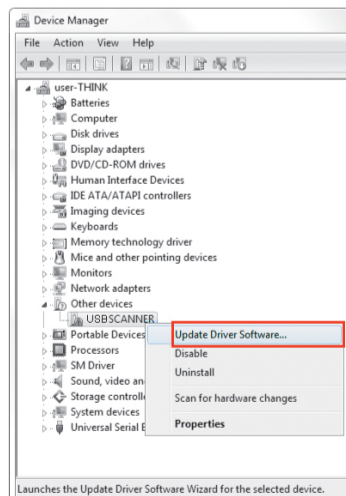
FAQ 1: The scanner cannot scan.

Solutions:

- Replug USB cable and make sure scanner is detected by your computer.
- Make sure the scanner is power on.
- It is possible that the driver installation has failed. Please try re-installing the driver. (For Windows OS)
 - a. Right-click on Windows **Start** and go to **Device Manager**.

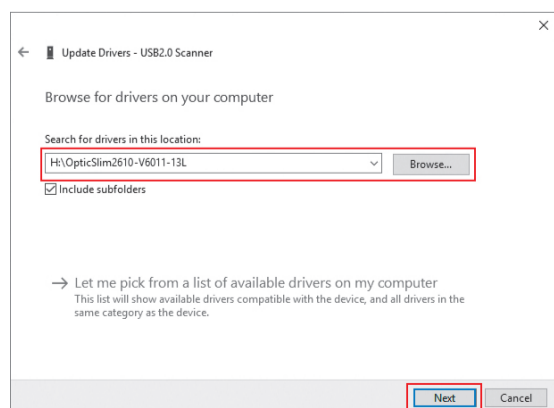


- b. In the **Device Manager** window, right-click on this scanner under **Other devices** and select **Update Driver Software**.



- c. Click **Browse my computer for driver software**.

- d. Select the folder or the DVD-ROM drive that contains this scanner's driver, then click **Next** to complete the installation.



FAQ 2: The scanner performs a very slow scan speed.

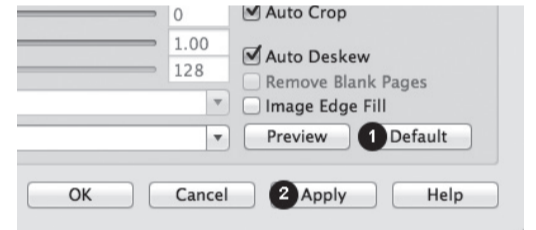
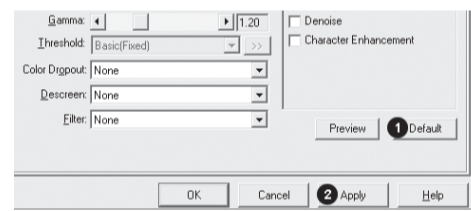
Solutions:

- Close all the other applications that are running in the background.
- Reduce the resolution.
- Make sure your computer meets the system requirements. (Refer to the Scanner User's Guide for more information.)

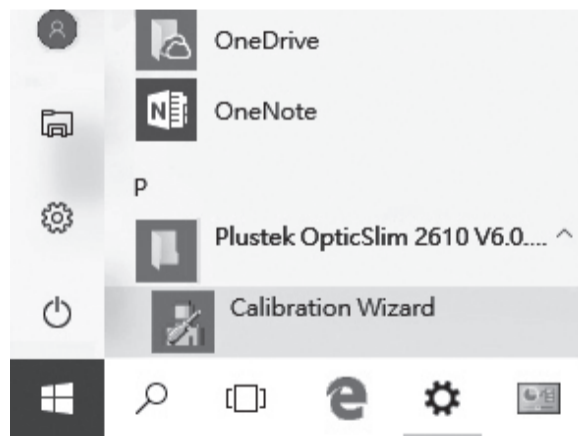
FAQ 3: The colors of the scanned images are strange.

Solutions:

- Please reset the scan settings to default in DocAction/MacAction and perform the scanning task again.



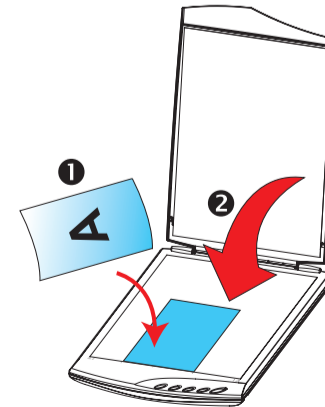
- Calibrate the scanner if colors of the scanned image vary a lot. Find **Calibration Wizard** as follows:



FAQ 4: The scanned images are not very clear.

Solutions:

- Please reset the scan settings to default in DocAction/MacAction and perform the scanning task again.
- Please remember to scan with your scanner cover closed properly.



Technical Support

If you need further support, please call 714-670-7713 to speak to our support representatives, 9 AM to 5:30 PM PST, Monday through Friday.

For detailed information, please visit product website:

<http://plustek.com/usa/products/flatbed-scanners/opticslim-2610/>