



Photo



Receipt



Business card



Ticket



Document

Scans **photos** and **documents** quick and easy

Detects documents and scans instantly. Just place your photo or document (receipts, business cards, tickets, etc.) into the document feeder of the plustek ePhoto Z300. No need to adjust formats. The scanned image is cropped to its original format automatically.

The Plustek ePhoto Z300 is an ideal photo and document scanning solution for home users, as well as small businesses.



Home



Shop



Office

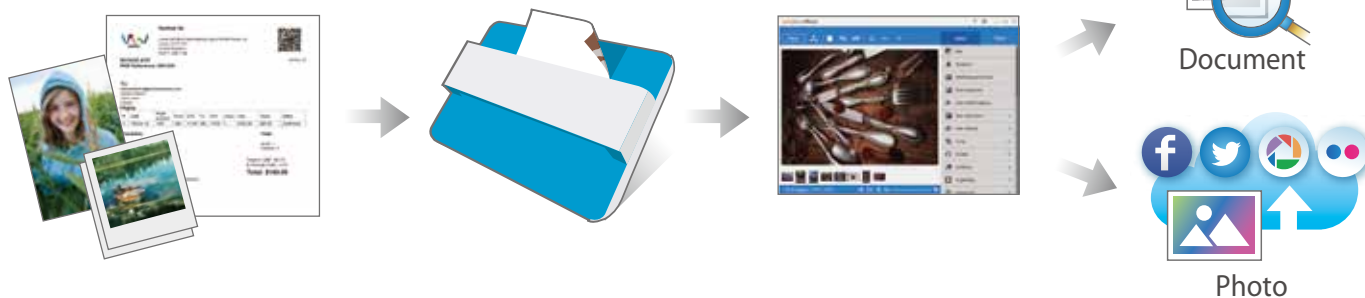


Company



Features:

- High quality CCD image sensor
- Detects documents and scans instantly
- Photo scanning speed of 2 seconds
- Document A4 scanning speed of 5 seconds
- Scan results support one to one high quality output printing
- Searchable PDF format available (for document only)



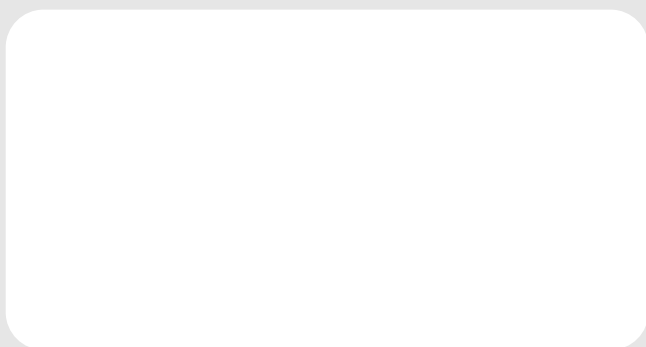
Hardware Requirements

Windows PC

2 GHz CPU or above / 4 GB RAM recommended
 10 GB Free Hard Disk Space / CD/DVD Drive or Internet Connection
 USB Port / Windows 7 / 8 / 10 / 11

Macintosh

2 GHz CPU or above (INTEL based CPU, NO PowerPC)
 4 GB RAM recommended / 10 GB Free Hard Disk Space
 CD/DVD Drive or Internet Connection / USB Port
 Mac OS X 10.8x-12.x or later ^[1]



Specification

Image Sensor	Color CCD
Light Source	LED
Optical Resolution	300 dpi/ 600 dpi
Scan Modes	Color: Input 48-bit · Output 24-bit Grayscale: Input 16-bit · Output 8-bit
Scanning Speed	4" x 6" Photo: Approx. 2 sec. Document(A4): Approx. 5 sec.
Scanning Area (W x L)	Min.: 1" x 1" Max.: 8.5" x 11.7"
Acceptable Paper Weight (Thickness)	Non-embossed: 0.76 mm or less
Power Supply	24 Vdc / 0.75 A
Interface	USB 2.0
Net Weight	1.48 Kg (3.26 Lbs)
Dimensions (W x D x H)	289.9 mm x 160.6 mm x 158mm (11.4" x 6.3" x 6.2")
Operating System	Windows 7 / 8 / 10 / 11 Mac OS X 10.8x-12.x or later ^[1]

*Specifications are subject to change without prior notice.

Software



^[1] Compatibility may differ depending on the software's version. Please refer to the OS compatibility on Plustek's website for the latest info.

The information and specifications contained in this document are subject to change without notice. Please visit Plustek website for the latest support information.

