



## **Plustek OpticFilm 8100**

Speed and ease of use for quality negatives and slides scanning

The **Plustek OpticFilm 8100** is a dedicated and versatile film scanner with 7200 dpi optical resolution. Its light sources give images more precise color rendering with less power consumption. Two one-touch buttons make scanning easier and more efficient for sharing on websites such as Flickr, Facebook, Picasa, etc.

The **Plustek OpticFilm 8100** and SilverFast software make a perfect combination. SilverFast Multi-Exposure® is especially for increasing the dynamic range, which adds more shadow details and eliminates noise. SilverFast NegaFix® with over 120 profiles for negative film guarantees best results when converting negatives into brilliant positives.

The **Plustek OpticFilm 8100** scanner is bundled with the newest version of LaserSoft Imaging's acclaimed scanner

software - SilverFast 8. The new WorkflowPilot® guides users through all scanning and processing steps. A new graphical user interface reduces the learning curve, and the preview mode allows users to immediately see the results of any adjustments made, even the results of complex functions. SilverFast 8 supports Multi-Tasking and the latest 64-bit hardware and is extremely fast and efficient. (For more information, please visit [www.silverfast.com](http://www.silverfast.com))

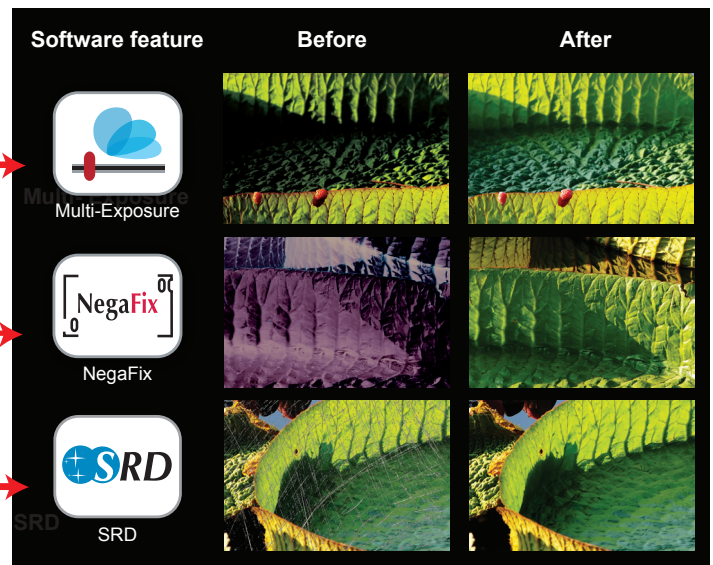
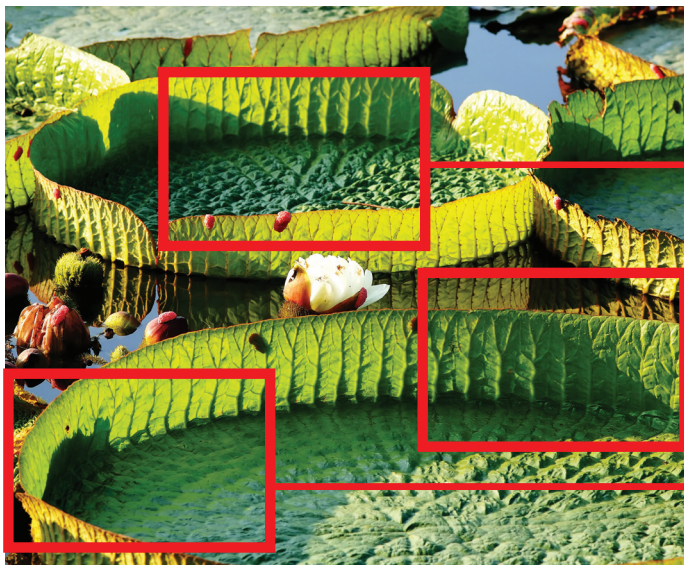
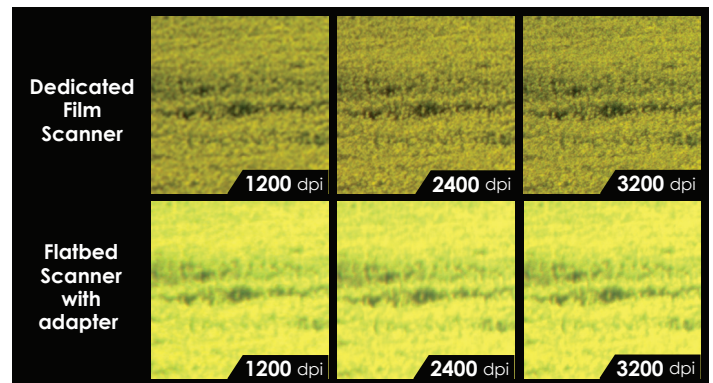
With the **Plustek OpticFilm 8100** it is easier than ever to get started. It is the ideal film scanner for a wide range of users, including home users, lomographers, small office / workshop users, amateur photographers and photographers.

# Plustek OpticFilm 8100

Speed and ease of use for quality negatives and slides scanning

## Key Features

- 7200 dpi resolution
- 48-bit color depth
- 64-bit hardware and software support
- SilverFast SE Plus 8 software bundled



Software Bundled



**SilverFast® SE Plus 8**

## System Requirements

DVD Drive / One available USB Port / 2 GB RAM (4 GB Recommended) / 10 GB free HDD space / High Color graphic card (VGA or higher)

Windows : CPU: 2 GHz CPU or above

Windows 7/ 8/ 10

Macintosh : CPU: 2 GHz CPU or above (INTEL based CPU, NO PowerPC)

Mac OS X 10.7.x/ 10.8.x/ 10.9.x/ 10.10.x/ 10.11.x/ 10.12.x/ 10.13.x/ 10.14.x/ 10.15

© 2020 by Plustek Inc. All rights reserved. All registered trademarks are the property of their respective owners. Specifications are subject to change without notification.

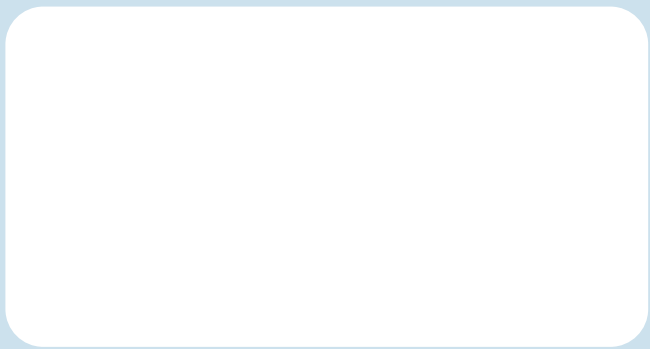


Image Sensor	CCD
Light Source	LED
Hardware Resolution	7200 dpi
Scan Modes	Color: 48-bit input, 24/48-bit output Grayscale: 16-bit input, 8/16-bit output B/W: 1-bit
Dynamic Range	3.6
Scanning Speed	3600 dpi: Approx. 36 sec (Multi-Sampling ON) 7200 dpi: Approx. 113 sec (Multi-Sampling ON)
Scanning Area (W x L)	36.8 mm x 25.4 mm (1.45" x 1")
Preview Speed	Negative Film: Approx. 8 sec (Multi-Sampling ON) Positive Film: Approx. 8 sec (Multi-Sampling ON)
Action Button	IntelliScan, QuickScan
Power Supply	15 Vdc / 1.0 A
Interface	USB 2.0
Net Weight	1.6 Kgs (3.5 Lbs)
Dimensions (W x D x H)	120 x 272 x 119 mm (4.73" x 10.7" x 4.7")
OS	Windows 7/ 8/ 10 Mac OS X 10.7.x/ 10.8.x/ 10.9.x/ 10.10.x/ 10.11.x/ 10.12.x/ 10.13.x/ 10.14.x/ 10.15
Hardware Requirements	Windows PC 2 GHz Processor or faster 2 GB RAM main memory (4 GB RAM recommended) 10 GB free space on hard disk drive CD/ DVD drive or internet connection Mac 2 GHz Processor or faster (INTEL based processor, NO PowerPC) 2 GB RAM main memory (4 GB RAM recommended) 10 GB free space on hard disk drive DVD drive or internet connection

