



Plustek OpticFilm 8100

Speed and ease of use for quality negatives and slides scanning

The **Plustek OpticFilm 8100** is a dedicated and versatile film scanner with 7200 dpi optical resolution. Its light sources give images more precise color rendering with less power consumption. Two one-touch buttons make scanning easier and more efficient for sharing on websites such as Flickr, Facebook, Picasa, etc.

The **Plustek OpticFilm 8100** and SilverFast software make a perfect combination. SilverFast Multi-Exposure® is especially for increasing the dynamic range, which adds more shadow details and eliminates noise. SilverFast NegaFix® with over 120 profiles for negative film guarantees best results when converting negatives into brilliant positives.

The **Plustek OpticFilm 8100** scanner is bundled with the newest version of LaserSoft Imaging's acclaimed scanner

software - SilverFast 8. The new WorkflowPilot® guides users through all scanning and processing steps. A new graphical user interface reduces the learning curve, and the preview mode allows users to immediately see the results of any adjustments made, even the results of complex functions. SilverFast 8 supports Multi-Tasking and the latest 64-bit hardware and is extremely fast and efficient. (For more information, please visit www.silverfast.com)

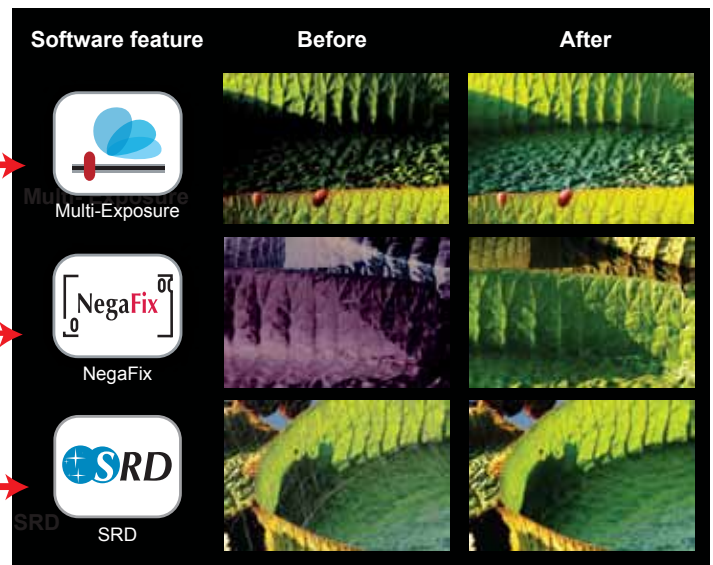
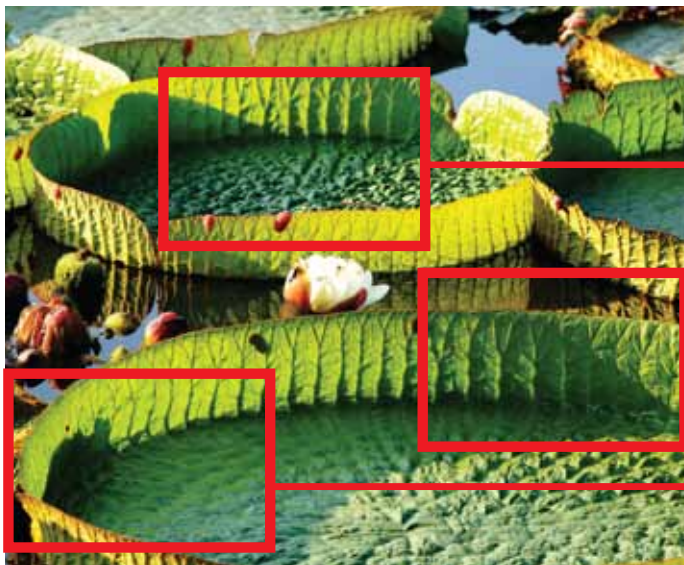
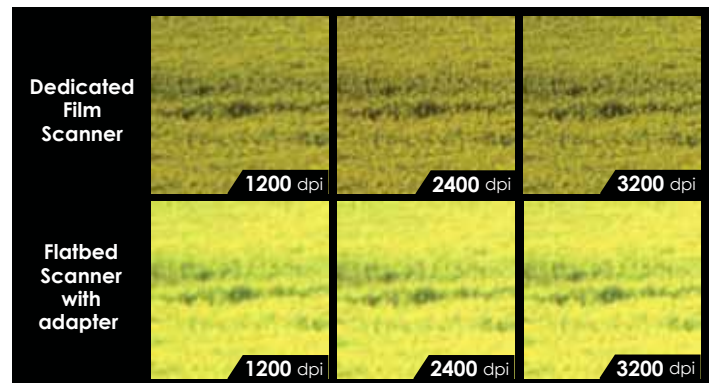
With the **Plustek OpticFilm 8100** it is easier than ever to get started. It is the ideal film scanner for a wide range of users, including home users, lomographers, small office / workshop users, amateur photographers and photographers.

Plustek OpticFilm 8100

Speed and ease of use for quality negatives and slides scanning

Key Features

- 7200 dpi resolution
- 48-bit color depth
- 64-bit hardware and software support
- SilverFast SE Plus 8 software bundled



Software Bundled



SilverFast® SE Plus 8

System Requirements

DVD Drive / One available USB Port / 2 GB RAM (4 GB Recommended) / 10 GB free HDD space / High Color graphic card (VGA or higher)

Windows : CPU: 2 GHz CPU or above

Windows XP/ Vista/ 7/ 8/ 10

Macintosh : CPU: 2 GHz CPU or above (INTEL based CPU, NO PowerPC)

Mac 10.5/ 10.6/ 10.7/ 10.8/ 10.9/ 10.10

© 2015 by Plustek Inc. All rights reserved. All registered trademarks are the property of their respective owners. Specifications are subject to change without notification.



Headquarter: sales@plustek.com

Image Sensor	CCD
Light Source	LED
Hardware Resolution	7200 dpi
Scan Modes	Color: 48-bit input, 24/48-bit output Grayscale: 16-bit input, 8/16-bit output B/W: 1-bit
Dynamic Range	3.6
Scanning Speed	3600 dpi: Approx. 36 sec (Multi-Sampling ON) 7200 dpi: Approx. 113 sec (Multi-Sampling ON)
Scanning Area (W x L)	36.8 mm x 25.4 mm (1.45" x 1")
Preview Speed	Negative Film: Approx. 8 sec (Multi-Sampling ON) Positive Film: Approx. 8 sec (Multi-Sampling ON)
Action Button	IntelliScan, QuickScan
Power Supply	15 Vdc / 1.0 A
Interface	USB 2.0
Net Weight	1.6 Kgs (3.5 Lbs)
Dimensions (W x D x H)	120 x 272 x 119 mm (4.73" x 10.7" x 4.7")
OS	Windows XP/ Vista/ 7/ 8/ 10 Mac 10.5/ 10.6/ 10.7/ 10.8/ 10.9/ 10.10
Hardware Requirements	Windows PC 2 GHz Processor or faster 2 GB RAM main memory (4 GB RAM recommended) 10 GB free space on hard disk drive CD/ DVD drive or internet connection Mac 2 GHz Processor or faster (INTEL based processor, NO PowerPC) 2 GB RAM main memory (4 GB RAM recommended) 10 GB free space on hard disk drive CD/ DVD drive or internet connection

