



Plustek SmartOffice PS406

Easy- to-use scanner fits just about anywhere
Quick, Portable, Easy Document & Plastic Card Scanning

Discover a new level of front-office productivity

Enhanced with innovative features, the **SmartOffice PS406 scanner** offers outstanding price/performance value in a compact footprint, conserving both space and budget. You get fast scanning speeds, a high daily duty cycle and robust paper handling capabilities, all from a compact, desktop scanner. The **SmartOffice PS406** offers businesses a powerful scanning solution, featuring speeds up to 80 images per minute and a duty cycle of up to 4000 sheets. This high-volume, sheet-fed scanner makes it easy to capture all your critical documents. And, it offers an amazing value with fast speeds, a 100-page feeder and incredible versatility.

Features exceptional feeding reliability

Engineered with one of the most advanced paper separation features in their class, the **SmartOffice PS406** is the first workgroup scanner in exceptional feeding reliability for an even wider variety of document weights. The SmartOffice PS406 also delivers uncompromised high-resolution performance of up to 20 pages per minute and 40 images per

minute in color at an astounding 300 dpi. Able to handle everything from business cards to rigid ID cards and documents, the **SmartOffice PS406** easily scans both sides of one sheet in just one pass. And, it does so in color, grayscale or bi-tonal. It's never been easier to electronically capture critical documents.

Save time with One-Touch scan to Searchable PDF

The **SmartOffice PS406** workgroup scanner conveniently includes everything in the box to get organizations up and scanning. With the Plustek DocAction, Plustek DI Capture, OCR and BCR software, users get image enhancement functionality as well as the option of scanning directly to Searchable PDF file, print or batch. Whether you need a faster way to access shared documents, a more affordable way to comply with government mandates or a better way to maintain the integrity of important documents, the SmartOffice PS406 is the perfect place to start. Furthermore, the automatic document feeder (ADF) is also robust enough to feed up to three hard cards continuously or an embossed card up to 1.2 mm in thickness.

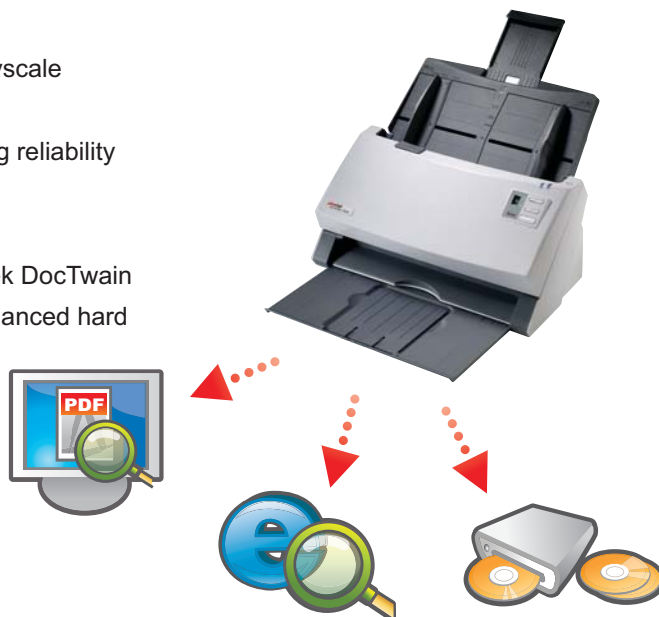
Plustek SmartOffice PS406

Discover a new level of front-office productivity
Bring Digital Documents to Your Workgroups

The SmartOffice PS406 document scanner makes document warehousing a simple task, with high-speed scanning at the touch of a button. 40 pages per minute and 80 images per minute, newly customised High Speed TWAIN drivers, a 100-page duplexing ADF make this the first choice for document processing. It supports most major scanning environments. Alongside its Plustek DocTwain driver, it offers users more flexibility and supports Auto Document Sizing. This contributes to faster scanning speed and greater productivity, and can be used for batch scanning with the ADF. Without this function, it is necessary to spend time manually entering the paper size during their pre-scan. Thanks to Auto Document Sizing, this time is now saved.

Key Features

- Enhanced for the ultimate in performance and reliability
- Fast, 40ppm / 80ipm scanning in Color, monochrome and grayscale
- Exceptional 300 dpi color scanning at 20ppm / 40ipm
- Advanced paper handling technology for the ultimate in feeding reliability
- Deskew using scanned image, Automatic Page Size Detection
- 3 colour dropout modes for advanced OCR processing
- Comes with Plustek DocAction, Plustek DI Capture and Plustek DocTwain
- Robust 100-page Automatic Document Feeder (ADF) with enhanced hard embossed card scanning
- TWAIN and WIA Drivers – Allows Full Document Management Solutions Implementations



Software Bundled



ABBYY FineReader 9.0 Sprint



NewSoft Presto! PageManager 9



Plustek DocAction

System Requirements

Pentium IV 2.0 GHz processor (Pentium IV 3.0 GHz processor recommended)
CD-ROM Driver / One available USB Port (USB 2.0 recommended) / 1GB RAM or higher recommended / 800 MB free HDD space (1 GB or larger recommended) / High Color graphic card (VGA or higher) / Windows XP, 2000, Vista, 7

© 2013 by Plustek Inc. All rights reserved.
All registered trademarks are the property of their respective owners.

Headquarters: sales@plustek.com

Specification

Optical Resolution	600 dpi
Max. Hardware Resolution	600 x 600 dpi
Technology	CCD Sensor
ADF Capacity	100 sheets (A4/Letter, 70 g/m ² or 18 Lbs) Note: Maximum ADF capacity varies, depending upon paper weight.
ADF Scanning Speed	40 ppm/80 ipm (200 dpi, color mode, A4 Portrait) 40 ppm/80 ipm (300 dpi, grayscale mode, A4 Portrait) 40 ppm/80 ipm (300 dpi, B/W mode, A4 Portrait) Note: Results may vary depending upon your scanning application, computer processor and system memory.
Scan Area(W x L)	Max. 216 x 356 mm (8.5" x 14") Min. 13.2 x 13.2 mm (0.52" x 0.52")
Acceptable Paper Sizes (W x L)	Max. 244 x 356 mm (9.6" x 14") Min. 50.8 x 50.8 mm (2" x 2")
Acceptable Paper Weight for ADF	40 to 220 g/m ² (10 to 58 Lbs)
Daily Duty Scan (Sheets)	4000
Roller Lifetime (Scans)	300000 (Customer replaceable)
Pad Lifetime (Scans)	50000 (Customer replaceable)
Power Adapter	24Vdc, 1.25 A
Interface	USB 2.0 High Speed
4 buttons	Scan, PDF, File, Standby
Physical Dimensions(W x D x H)	318.7 x 230.7 x 228.3 mm(12.55" x 9.08" x 8.99")
Weight	2.7 Kg (5.95 Lbs)
Protocols	Compatible with ISIS & TWAIN



As an international ENERGY STAR Partner, Plustek has determined that this product meets the international ENERGY STAR Program for energy efficiency.

