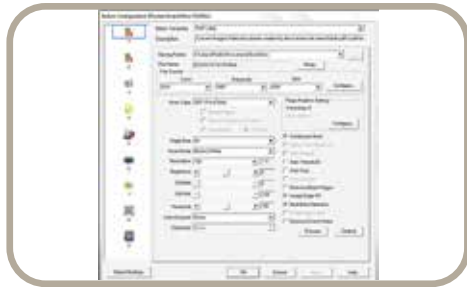


OpticSlim 1180

❖ SOFTWARE



DocAction

Plustek DocAction

Button utility to simplify document scanning. DocAction enables you to specify your personalized scanning configuration settings and scan documents with the click of a button. Scanned documents are automatically sent directly to Printer, Email, Folder or FTP. DocAction also enables you to scan directly to many imaging and document management applications. DocAction saves scanned documents in all common imaging formats including JPEG, TIFF, and PDF.

* The profiles number may differ from the models.



Powered by ABBYY®

ABBYY FineReader Sprint

Industry standard TWAIN and WIA drivers combined with TIF, JPG, PDF and Microsoft Office file formats ensure compatibility with thousands of scanning and imaging programs. ABBYY FineReader Sprint is included to easily create and manage searchable PDFs at the touch of a button.

Hardware Requirements

Pentium® IV 2.4 GHz processor
DVD-ROM Drive
One available USB 2.0 Port
1GB RAM (2GB or higher recommended)
2GB free HDD space (3GB or larger recommended)

©2020 Plustek
Plustek is registered trademarks of Plustek.

ABBYY® FineReader™ © ABBYY. OCR by ABBYY. ABBYY and FineReader are trademarks of ABBYY Software, Ltd. which may be registered in some jurisdictions. Any other products or company names appearing in this document are the trademarks or registered trademarks of the respective companies.



Specification

Image Sensor	CIS
Light Source	LED
Optical Resolution	1200 dpi
Scan Modes	Color: 48-bit input, 24-bit output Grayscale: 16-bit input, 8-bit output B/W: 1-bit output
Scanning Speed	15 sec (Color Mode, 300dpi, A3) 9 sec (Grayscale/ B&W Mode, 300dpi, A3)
Scanning Area (W x L)	Max. 297 mm x 431.8 mm (11.69" x 17")
Power Supply	24 Vdc / 0.75 A
Interface	USB 2.0
Net Weight	4.32 Kgs (9.52 Lbs)
Dimensions (W x D x H)	589 x 407 x 68 mm (23.18" x 16.02" x 2.67")
Protocol	TWAIN Compliant
OS	Windows Vista / 7 / 8 / 10 Mac OS X 10.8 / 10.9 / 10.10 / 10.11 / 10.12 / 10.13 / 10.14

plustek

OpticSlim Series

OpticSlim 1180



Suitable size and full function for office use



The Plustek OpticSlim 1180 is an A3, tabloid sized scanner, designed for high quality scanning of Art, photos, scrapbooks, genealogy research, newspaper, historical documents scrapbooks, documents, and other items up to 297 mm x 431.8 mm (11.69" x 17") in size. OpticSlim 1180 includes four one-touch scan buttons to simplify and automate the most common scanning functions (i.e. scan, OCR, PDF and email).

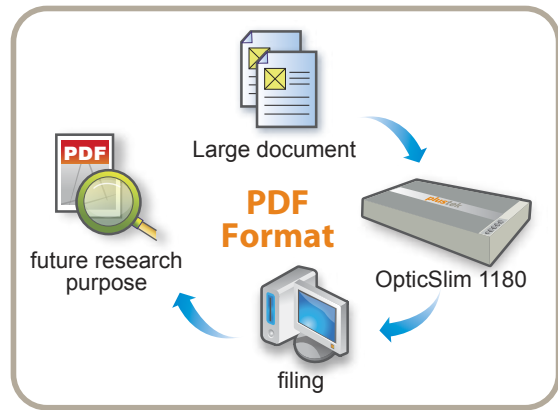
❖ KEY FEATURES

- A3 size scanning area
- Easy-to-use single touch buttons, design for scan, OCR, PDF and Email
- Up to 1200 dpi optical resolution
- LED light for energy saving, environmentally friendly
- Searchable PDF files format available
- Compact design, small and light weighted



Friendly installation and quick start program

The OpticSlim 1180 has very user-friendly utility interface and easy to install. You can use our scan utility software- Plustek DocAction to configure the scan profile. In addition, we have function buttons design for scan, OCR, PDF and Email. One single touch and you can start scanning.



Seachable PDF files format and TWAIN compliant available

The bundled software- ABBYY FineReader can help you do OCR to generate the searchable PDF. The OpticSlim 1180 is not only help you digitalised your large batch document, but also help you do the filling job and meet the future research purpose. The OpticSlim 1180 also allow you use TWAIN compliant to scan.



Compact design, small and light weighted

The compact design and small footprint of OpticSlim 1180 allow you to place it on your office. The dimation 68mm x 589mm x 407mm is suitable for the blueprint scanning or other architecture use. Also, the net weight only 4.32 kg, which allow you to move more smoothly and easy.

1 Auto Threshold
Automatically threshold the current image into a binary black and white image.

2 Remove background
Remove the document background color.

3 Auto Crop & Deskew
Automatically straightens and crops image to the documents actual size.

4 Auto Color Mode
Automatically detects document color and scans document in color, grayscale or black & white mode.

5 Multi-Image Output
Scans and saves documents in 2 or 3 color modes at same time.

6 Color Dropout
Removes red, green or blue color when scanning forms.

7 Punch hole removal
Automatically detects the location of punch holes on the image and remove them

AUTO CROPPING
It can automatically crop your image or document according to your document edge.

9 sec
Scan an A3 Grayscale document with 300dpi only takes you 9 seconds.

E-mail
Allows you to easily upload files or scanned images to the E-mail.

SEARCHABLE PDF
Save paper documents as searchable PDFs at the touch of a button and find your information faster.

energy Saving
LED light for energy saving, environmentally friendly