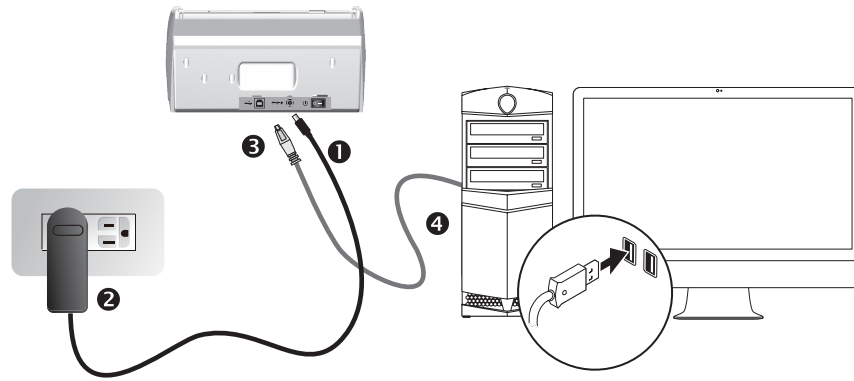


# Quick Installation Guide

17-07-2A65L80-C

## Step 1 Connecting

Connecting the scanner to your computer

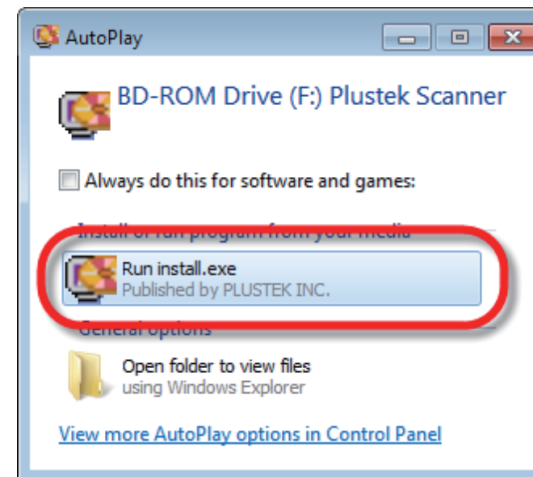
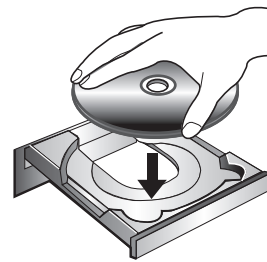


\*Please use the AC adapter provided with the scanner.

## Step 2 Installing

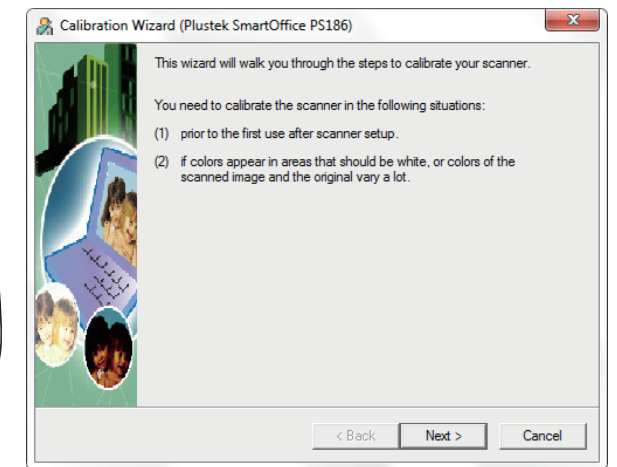
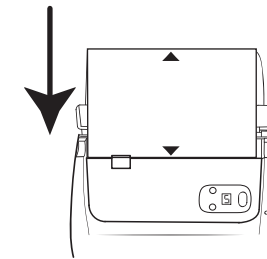
Do one of the following to install the scanner software:

- Insert the Setup/Application CD/DVD-ROM, included with your scanner, into your CD/DVD-ROM drive.
- Download the driver from our official website: [www.plustek.com/PS186](http://www.plustek.com/PS186) or search **PS186** in <http://plustek.com/usa/support/drivers-and-downloads.html>




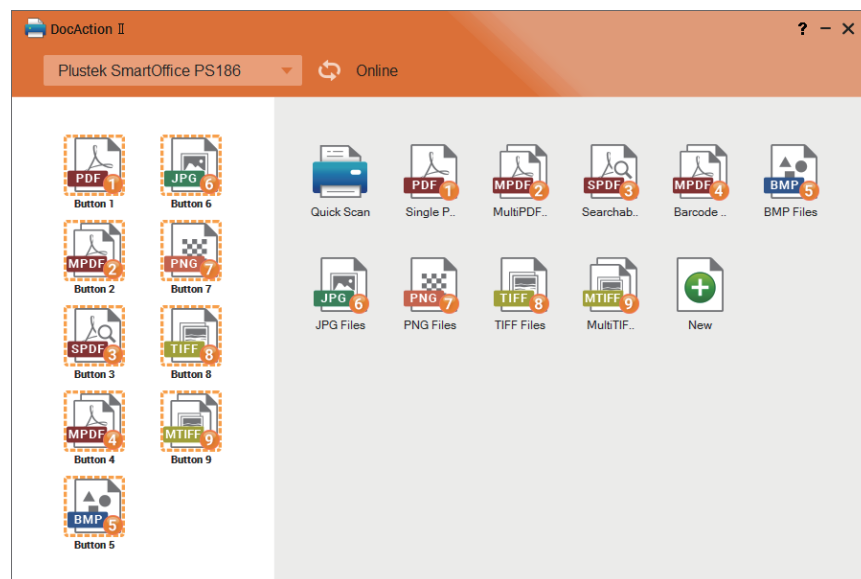
## Step 3 Calibrating

After the software is installed, you will be prompted to perform the scanner calibration.



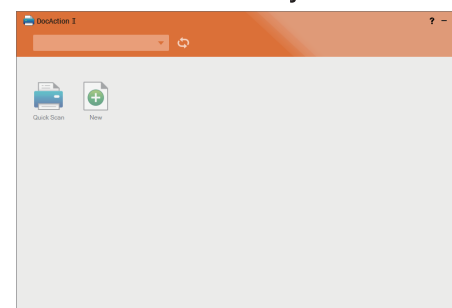
## Step 4 Scanning

Double-click the icon  on the desktop. Start the scanning with scanner panel buttons, **Quick Scan** button or the scan profiles on the screen.



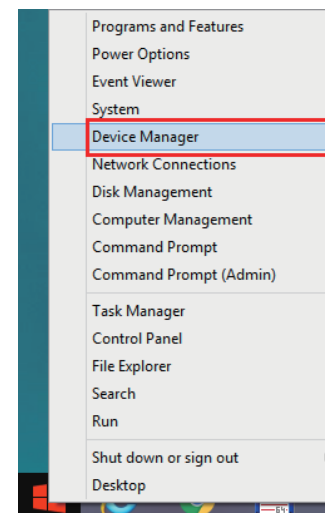
## Troubleshooting

1. If the scanner is not detected by DocAction II:



- Check the USB cable connection between the computer and scanner.
- Make sure the scanner is power on.
- Check the scanner panel monitor, if it shows 0 maybe the software installation is failed, please try manually installing the software. (For Windows OS)

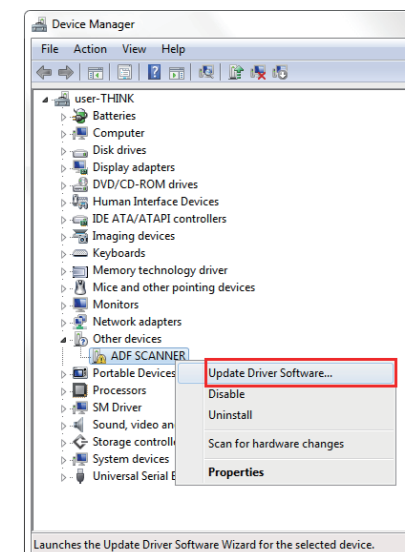
a. Right-click on Windows **Start** and go to **Device Manager**.



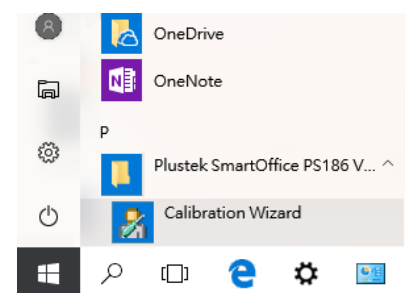
b. In the **Device Manager** window, right-click on this scanner under **Other devices** and select **Update Driver Software**.

c. Click **Browse my computer for driver software**.

d. Select the folder or the CD/DVD-ROM drive that contains this scanner's driver and manually run the **install.exe** file.

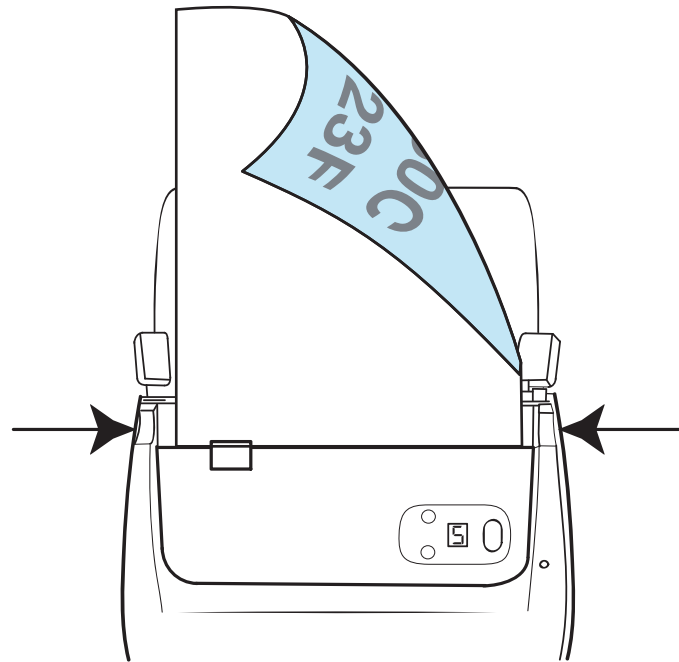


2. IF you encounter color issue, please find **Calibration Wizard** as following:




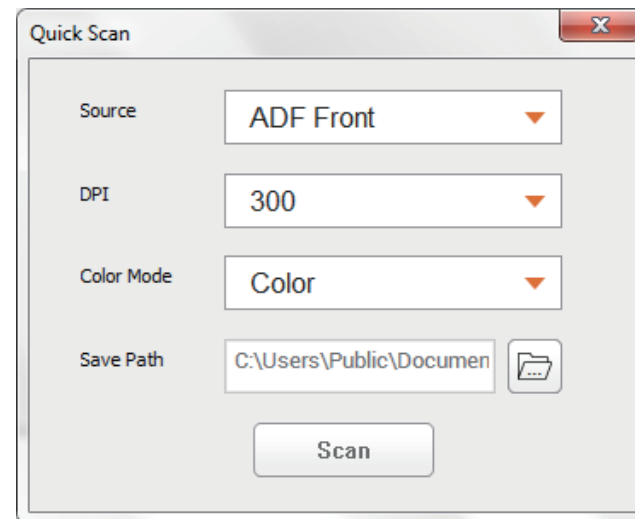
## Place Documents

Load the documents, headfirst and face down, toward the center of the ADF paper chute. Adjust the paper width slider for the paper size you are using.





## Scan from the Quick Scan Button

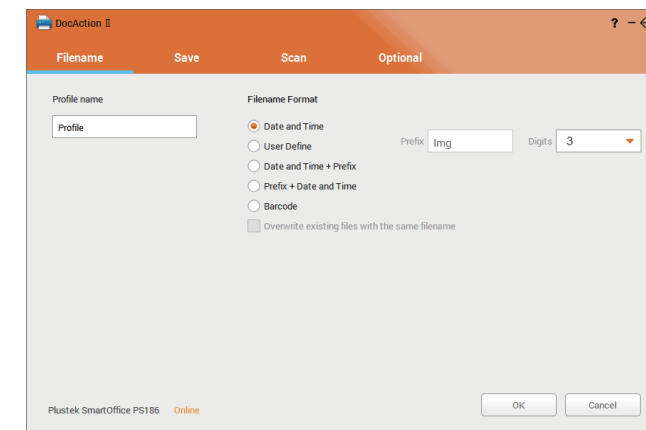
Double-click the  **Quick Scan** button to pop-up the settings dialog.



Adjust **Source**, **DPI**, **Color Mode** and **Save Path**, then click **Scan** button.

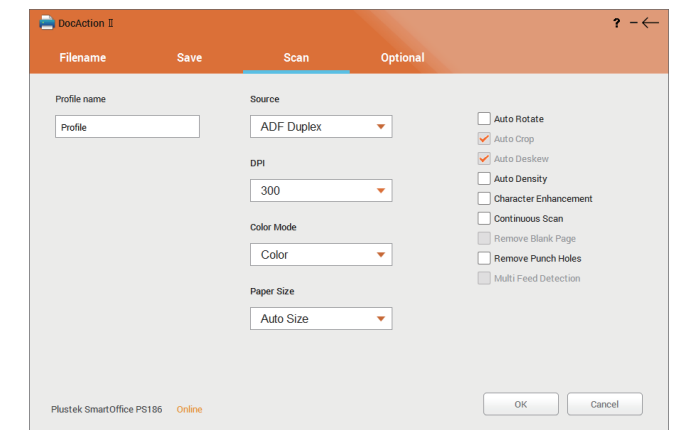
## Add Customized Scan Profiles(1/3)

Double-clicking the  **New** button or right-clicking the  **New** button, and select **New** from the pop-up menu. Select **Filename** format and **Save** destination.



## Add Customized Scan Profiles(2/3)

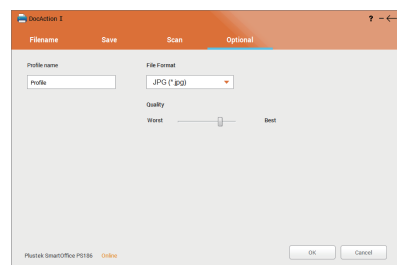
Adjust scan parameter settings.



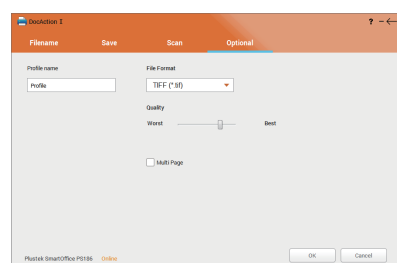
## Add Customized Scan Profiles(3/3)

You may configure the optional settings in this page.

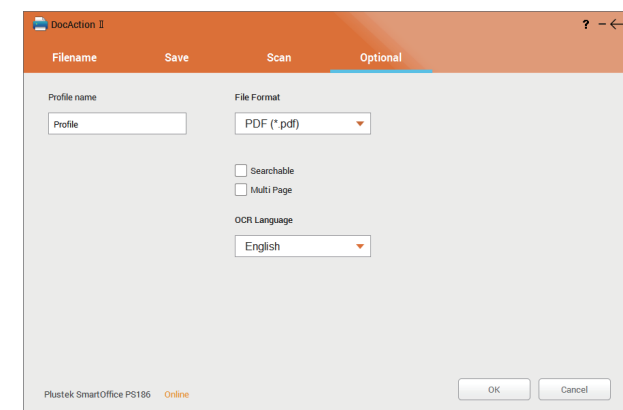
- **JPG**: You can adjust the quality of the JPG file format.



- **TIFF**: You can adjust the quality of the TIFF file format. You may activate the **Multi Page** function to save the scanned images in Multi-page TIFF format.



- **PDF**: You may activate the **Searchable** function to save the scanned images in Searchable PDF format. You may activate the **Multi Page** function to save the scanned images in Multi-page PDF format. Select the **OCR Language** from the dropdown list, if you want to save the scanned images as Searchable PDF format.



## Drag and Drop to Set Customized Button

You may drag and drop the desired scan profiles from the **Scan profile area** to set the button functions.



## Scan from the Scanner Buttons

1. Check current button settings in the **Button display area**. If needed, you may also modify settings to meet your current needs in the **Scan profile area**.
2. Press the up or down button to select the desired task.
3. Press the **Scan** button.

